

# SPECIAL VEHICLES

2016 Edition 1



# WELCOME

At Vauxhall Special Vehicles, we believe we understand the unique requirements of the UK Emergency Services. We can deliver a wide choice of car and van models, specifically designed and rigorously tested to meet your demands. Our flexible production facility, located at our manufacturing plant in Luton, is able to offer a one-stop shop purchasing experience so we can supply turnkey vehicle solutions that enable rapid turnaround of replacement products, plus we can now offer a unique in-house de-commissioning and remarketing service.

This range brochure gives a brief overview of our products and services. Our dedicated website [vauxhallspecialvehicles.co.uk](http://vauxhallspecialvehicles.co.uk) contains comprehensive details including individual product sheets and demonstrator vehicle specifications to help you understand our range availability.

### VAUXHALL SPECIAL VEHICLES CONTACTS:

Dick Ellam  
Manager Vauxhall Special Vehicles  
Telephone: 07775 825415

Perry Clarke  
Sales Manager North  
Telephone: 07940 547775

Mike Roberts  
Sales Manager South  
Telephone: 07775 825351

Admin Team  
Telephone: 01582 409999  
Email: [vsv@vauxhall.co.uk](mailto:vsv@vauxhall.co.uk)



# CONTENTS

<b>Welcome</b>	2
<b>Corsa</b>	5
<b>New Astra</b>	6
<b>Insignia</b>	7
<b>Insignia Country Tourer</b>	8
Armoured <b>Insignia</b>	9
<b>Mokka</b>	10
<b>Combo</b>	11
<b>Combo Fire</b>	12
<b>Combo Dog Unit</b>	13
<b>Vivaro Prison Cell</b>	14
<b>Movano</b>	15
<b>Movano Protected Support Unit</b>	16
<b>Vauxhall OnStar/Emergency Package</b>	18
<b>Aftersales Support/Special Vehicle Demonstrators</b>	19
<b>Remarketing</b> A first for emergency vehicles	20
<b>Range Details</b> Fuel economy and emissions data	21



## SPECIAL VEHICLES

# CORSA

Hatchback\*



### STANDARD FEATURES INCLUDE:

- City Mode steering function
- Hill start assist
- Electronic engine deadlock immobiliser
- Electrically operated front windows/mirrors
- Six airbags
- Speed-sensitive power-assisted steering
- Home Office Automotive Conformance (EMC) Specification 6 compliant
- Home Office brake tested
- CiA447 CAN compliant

### OPTIONAL FEATURES INCLUDE:

- Front and rear parking distance sensors
- Full size spare wheel
- Remote central ultrasonic alarm

### Engine availability

1.3CDTi 75PS Start/Stop ecoFLEX

1.0i 90PS Turbo Start/Stop ecoFLEX

### CO<sub>2</sub> (g/km)

98-96

102



Image shown includes combined 10-way switch panel and aperture for communications head unit.

\*Emergency model based on Design trim.

# NEW ASTRA

Hatchback and Sports Tourer\*



## STANDARD FEATURES INCLUDE:

- Electronic Stability Programme (ESP)
- Six airbags
- 16-inch 7-spoke alloy wheels
- Tyre inflation kit as standard (Full-size spare wheel at extra cost)
- Air conditioning
- 12-volt auxiliary power socket
- Driver's seat height adjuster
- 60/40 split-folding rear seat back
- Electrically operated front windows
- Electrically adjustable heated door mirrors
- Remote control central deadlocking
- Steering column adjustable for reach and rake
- Home Office brake tested
- CiA447 CAN compliant
- Home Office Automotive Conformance (EMC) Specification 6 compliant

\*Emergency model based on Design trim.

## NEW ASTRA SPORTS TOURER ONLY:

- 12-volt auxiliary power socket located in luggage compartment
- Retractable luggage compartment cover

## OPTIONAL FEATURES INCLUDE:

- Seat Comfort Pack One (Driver's seat with six-way manual adjustment and four-way electrical lumbar adjustment)
- Front and rear parking distance sensors
- Remote central ultrasonic alarm

Engine availability	CO <sub>2</sub> (g/km)
1.6CDTi110PS Start/Stop ecoFLEX	92-88
1.6CDTi136PS Start/Stop	104-99



Image shown includes independent communications fascia head unit and 10-way switch panel.

# INSIGNIA

Hatchback and  
Sports Tourer\*



## STANDARD FEATURES INCLUDE:

- Electronic Stability Programme (ESP)
- Six airbags
- Full-size matching spare wheel and tyre
- Electronic climate control
- 12-volt auxiliary power socket
- Electric height-adjustable driver's seat
- Electric four-way lumbar adjustment on driver's seat
- Automatic lighting control
- 60/40 split-folding rear seat back
- Electrically operated windows
- Electrically adjustable/heated door mirrors
- Remote control security alarm
- Lowered and uprated sports suspension
- Sports pedals
- Front fog lights
- Home Office brake tested

\*Emergency model based on Design trim.

- CiA447 CAN compliant
- Home Office Automotive Conformance (EMC) Specification 6 compliant

## OPTIONAL FEATURES INCLUDE:

- Navi 900 IntelliLink
- Front and rear parking distance sensors
- Full-size spare wheel

Engine availability	CO <sub>2</sub> (g/km)
1.6CDTi 136PS Start/Stop manual	109-99
1.6CDTi 136PS automatic	129-124
2.0CDTi 170PS Start/Stop manual	124-114
2.0CDTi 170PS automatic	149-143



999/At scene dual function, covert single switch.

## SPECIAL VEHICLES

# INSIGNIA

## Country Tourer

Practical, rugged and very stylish this 4x2 Country Tourer features increased ground clearance for additional versatility



### STANDARD FEATURES INCLUDE:

- FlexRide
- Increased ground clearance
- 18-inch diamond-cut bi-colour alloy wheels
- Silver-effect roof rails / Front fog lights
- Dark-tinted rear windows
- Home Office brake tested
- CiA447 CAN compliant

### Engine availability

### CO<sub>2</sub> (g/km)

2.0CDTi170PS Start/Stop FWD Manual

124



Image shown features switch panel facia with touch screen.



## SPECIAL VEHICLES

# Armoured INSIGNIA

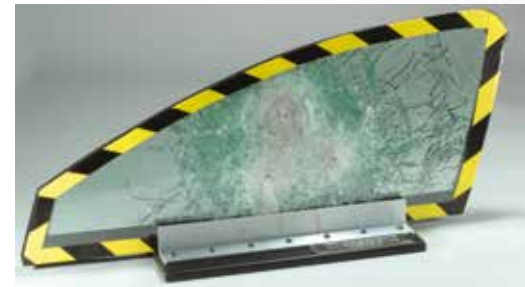
Insignia Armoured Vehicle offers exceptional levels of protection without compromising its looks, comfort or handling.



## STANDARD FEATURES INCLUDE:

- Independently tested to European ballistic standards
- Two levels of ballistic protection available
- Full 360 degree protection with steel and composite materials
- Tested up to VSAG 08
- Home Office brake tested

Protection solution can be installed into any of the Insignia Hatchback and Sports Tourer model line ups from the Design variant up to the VXR, should a high performance vehicle be required.



Glass ballistically tested.



Rear upstand between passenger and rear load compartments. (Hatchback model shown)

# MOKKA

## SUV



### STANDARD FEATURES INCLUDE:

- Switchable electronic stability programme
- Traction control
- Descent control system
- Hill start assist
- Anti-lock Braking System
- Six airbags
- Dual-zone electronic climate control
- Multi-function trip computer
- Cruise control
- Remote control alarm system
- Automatic lighting control
- Rain-sensitive windscreen wipers
- Electrically adjustable/heated door mirrors
- Front fog lights
- Front and rear parking distance sensors

- Silver-effect roof rails
- Sterling silver-effect 18-inch alloy wheels with 215/55 R 18 tyres
- Home Office brake tested
- CiA447 CAN compliant
- Home Office Automotive Conformance (EMC) Specification 6 compliant

### 4X4 MODELS ALSO FEATURE:

- Intelligent four-wheel drive

Engine availability	CO <sub>2</sub> (g/km)
1.6CDTi 136PS Start/Stop FWD	114
1.6CDTi 136PS Automatic FWD	134
1.6CDTi 136PS Start/Stop 4X4	124



Image shown includes independent communications facia head unit and 10-way switch panel.

\*Emergency model based on Exclusiv trim.

## SPECIAL VEHICLES

# COMBO

Available in Van or Crew van body styles with a range of load lengths and roof heights.



## STANDARD FEATURES INCLUDE:

- Anti-lock Braking System with electronic brakeforce distribution
- Driver's airbag
- Seatbelt pretensioner system
- Remote control central deadlocking
- Lockable fuel filler cap
- Electronic engine deadlock immobiliser
- Lockable glovebox
- Reach and rake-adjustable steering column
- Reach and rake-adjustable front seats
- Electrically operated front windows
- Unglazed asymmetric rear doors
- Full-height steel bulkhead
- Load restraint lashing eyes
- Illuminated load area

- Home Office Automotive Conformance (EMC) Specification 6 compliant
- Home Office brake tested
- Payloads available from 750-1000kg

### Engine availability

	CO <sub>2</sub> (g/km)
1.3CDTi 90PS	136-133
1.3CDTi 90PS Start/Stop ecoFLEX	129-126
1.6CDTi 105PS Start/Stop	150-136
1.6CDTi 90PS Start/Stop Tecshift	140-130
2.0CDTi 135PS	154



Image shown includes combined 10-way switch panel and aperture for communications head unit.

## SPECIAL VEHICLES

# COMBO FIRE

Available in Van or Crew van body styles with a range of load lengths and roof heights.

## STANDARD FEATURES INCLUDE:

- Anti-lock Braking System with electronic brakeforce distribution
- Driver's airbag
- Seatbelt pretensioner system
- Remote control central deadlocking
- Lockable fuel filler cap
- Electronic engine deadlock immobiliser
- Lockable glovebox
- Reach and rake-adjustable steering column
- Reach and rake-adjustable front seats
- Electrically operated front windows
- Unglazed asymmetric rear doors
- Rear seat with 'fold and tumble' and 60/40 split seat back and cushion
- Load restraint lashing eyes
- Illuminated load area



Load area with steel load guard.



- Home Office Automotive Conformance (EMC) Specification 6 compliant
- Home Office brake tested
- Payloads available from 750-1000kg



Twin glazed sliding side doors.

# COMBO DOG UNIT

The Combo Dog Unit has been developed to accommodate two dogs while meeting stringent DEFRA standards.



## STANDARD FEATURES INCLUDE:

- Double dog compartment manufactured from 6mm white polypropylene, 940mm high x 600mm wide x 1100mm deep conforming to DEFRA requirements
- Fitted with removable central divide and heavy-duty rubber matting to the floor
- Sealed and fitted with drainage plugs to allow waste water to be drained during cleaning
- 5-litre water bottle holder
- Two stainless steel gates constructed with vertical bars to prevent claw and paw damage with lockable latches
- Rear escape hatches, with sliding laminated glazed panels
- Supplementary lighting and ventilation (incorporating air conditioning) all controlled from the vehicle cab area
- Multiple storage areas designed to separately store dry and wet equipment



Rear escape hatches.

## OPTIONAL FEATURES INCLUDE:

- Temperature monitoring
- Thermostatic control (requires temperature monitoring)
- Hand wash facility



Lockable stainless steel gates with overhead storage.

# VIVARO PRISON CELL

Our prison cell vehicle has been specifically designed for our Vivaro van model, allowing the fitment of a two person cell unit along with twin additional rear-facing seats to allow the monitoring of cell occupants.



## STANDARD FEATURES INCLUDE:

- Two-person prison cell fully sealed with perspex inserts to allow for floor to ceiling visibility of occupants
- Full-height emergency exit door opening into the rear passenger compartment
- Cell finished in white to aid cleaning
- Cell compliant to OEM EC17 luggage retention (50kph) crash test
- Supplementary cell lighting and ventilation all controlled from the vehicle cab area
- Two additional rear facing seats. M1 standard
- Storage box fitted between the rear seats and the cab area
- Hi-visibility edging for vehicle side doors

## OPTIONAL FEATURES INCLUDE:

- Internal and external visual and audio recording for cell
- Split cell
- Hi-visibility rear step
- Third additional rear step



Image shown features storage box and configurable seating solution.



Two-person prison cell with side facing seats.

## SPECIAL VEHICLES

# MOVANO

The Movano is big, strong and very versatile. An extensive range of options allow it to be tailored to precisely match operational requirements.



## STANDARD FEATURES INCLUDE:

- Six-way adjustable driver's seat
- Driver's seat armrest
- Dual front passengers' bench seat
- Electrically operated front windows
- Twin overhead storage shelves
- 11-litre lidded glovebox
- Driver's airbag
- Remote control selective door locking with three-button key with deadlocks
- Electronic engine deadlock immobiliser
- High-level brake light
- Home Office Automotive Conformance (EMC) Specification 6 compliant
- ACPO ITS Single Vehicle Architecture compliant
- Payloads available from 966-2254kg

### Engine availability

Engine availability	CO <sub>2</sub> (g/km)
2.3CDTi 110PS	211-207
2.3CDTi 110PS Start/Stop ecoFLEX	201-197
2.3CDTi 125PS	246-207
2.3CDTi 136 BiTurbo Start/Stop ecoFLEX	219-176
2.3CDTi 163 BiTurbo Start/Stop ecoFLEX	219-180

### CO<sub>2</sub> (g/km)



Image shown includes independent communications fascia head unit and 10-way switch panel.

# MOVANO

## Protected Support Unit

Built around the award-winning Movano, our PSU is strong and versatile. Its unique, modular design can be adapted to suit any operational situation. An extensive range of options lets you tailor the vehicle to meet your exact requirements.



### STANDARD FEATURES INCLUDE:

- Fully modular floor tracking system with M1 certified mounting points
- O/S overhead storage shelf incorporating individually switchable lighting
- Additional interior white and red lighting, for low light level adaptation prior to deployment
- 8mm anti-bandit polycarbonate windscreen with anti-spall feature, removing the need for drop down guard
- Polycarbonate load area glazing fitted with contravision material to prevent viewing into the vehicle
- Spray-on interior lining for the load area for 360° protection with half-height polycarbonate panels for added protection
- Tyron® run-flat tyre bands
- Powder coated steel guards for the vehicle radiator and engine underside
- Secondary battery with split-charging facility



Six compartment dog cell.



Configurable seating solution.



## OPTIONAL FEATURES INCLUDE:

- Climate control incorporating air conditioning and heating
- Information/entertainment monitor
- Additional control panel to operate auxiliary equipment from the load area as well as the cab
- 240V inverter for appliances and multiple 12V auxiliary sockets for varying equipment
- Single and double width, fixed or foldable tables
- Choice of single or two-person prison cell incorporating supplementary cell lighting and ventilation all controlled from the vehicle load area (Cell compliant to OEM EC17 luggage retention (56km/h) crash test)
- Choice of ready developed rear solutions including storage for both Armadillo and round shields as well as kit bags or bespoke solutions with mounting points for various OEM equipment
- Additional door catch for side loading door
- Additional check straps for cab and rear, hinged doors
- Roof protection (tested to withstand a 44kg tetrahedron weight dropped from a height of 2.8m)
- Additional headlight and tail light polycarbonate protection
- Fire suppression system for engine bay operated from cab
- Sprung loaded bolts for access doors for added security
- DEFRA compliant six compartment dog cell with extendable platform and ladder. Includes climate control and sound deadening



Single containment cell.



Configurable storage solution.



Image shown features 360° high level lighting and nearside despatch light.

# VAUXHALL ONSTAR



# EMERGENCY PACKAGE

## STANDARD FEATURES INCLUDE:

Vauxhall OnStar is your personal connectivity and service assistant offering a range of features and benefits for your fleet of emergency vehicles. From a 4G Wi-Fi hotspot with the capability to connect with up to seven devices, to stolen vehicle recovery with vehicle location and ignition block, Vauxhall OnStar keeps your vehicles connected. Search Vauxhall OnStar to find out more.



### STOLEN VEHICLE

Theft alert  
Vehicle location  
Ignition block



### EMERGENCY

Automatic Crash Response  
24-hr Emergency call service  
Roadside Assistance



### VEHICLE DIAGNOSTICS

OnStar vehicle diagnostics monthly email  
On demand diagnostics  
Dealer Maintenance notification



### WI-FI HOTSPOT



### REMOTE CONTROL

Smartphone App  
Remote door lock/unlock via advisor  
Remote horns/lights via advisor  
Find my car



### DESTINATION DOWNLOAD

## TECHNOLOGY

Our vehicles are geared towards the latest directives for emergency vehicles. We were the first to develop an SVA (Single Vehicle Architecture) model – Insignia – and the latest stage of our Astra development is fully compliant with the CiA447 protocol, another **industry first**.

## DUTY OF CARE

All components are rigorously tested to ensure they meet the highest standards of occupant and pedestrian protection. Equipment within the head impact area is designed in line with the theoretical 'H-point' principle, enhancing visibility and comfort while eliminating the possibility of items intruding in to the occupant's area in the event of a collision.

## ECONOMY

Our one-stop shop supply solution eliminates the need for unnecessary on-costs, such as additional vehicle movements to auxiliary equipment suppliers.



## ASSOCIATION OF CHIEF POLICE OFFICERS

### QUALITY

Wherever possible, all components are designed, tested and manufactured using our own in-house facilities and workforce. Parts sourced from third-party suppliers are purchased by GM and meet stringent OEM (Original Equipment Manufacturer) standards of safety and quality.

### REMARKETING

All equipment fitted is designed to have as little impact on the vehicle as possible, promoting ease of decommissioning and ensuring the highest resale value. This has the added benefit of prolonging the life of the vehicle (see next page for more details).

### AFTERSALES SUPPORT

At Vauxhall Special Vehicles we recognise the importance of keeping your fleet running at all times and getting vehicles that have been taken out of service back on the road as soon as possible. For this reason aftersales and technical support is critical.

Vauxhall have two dedicated Northern and Southern Corporate Customer Care managers, who work alongside a specially trained Technical Assistance Manager, to help support your fleet.

We have also worked to utilise Vauxhall's extensive dealer network to help support you when a vehicle is off the road. We have a special training curriculum run from the GM Academy in Luton specifically to help dealer technicians receive comprehensive training for Bluelight equipment, as well as a special Service Level Agreement that a number of dealers have signed up to.



Replacement parts ordering is also accounted for with a special process for ordering both base vehicle and Bluelight parts to ensure that new items are turned around as efficiently as possible.

All this helps to ensure vehicle repairs are dealt with in a professional and timely manner while maintaining the highest standards of workmanship and vehicle security whilst the vehicle is in our care.

For maintenance and upkeep that you may wish to carry out in your own dedicated workshops we offer a range of workshop manuals and wiring diagrams to assist you in diagnosing and repairing your vehicles.

### SPECIAL VEHICLE DEMONSTRATORS

As well as our dedicated fleet of civilian demonstrator vehicles, which can be used to test and evaluate the base vehicle, Vauxhall Special Vehicles also offers a range of Bluelight demonstrators for assessing the vehicles under operational conditions.

To confirm the availability of vehicles and to book your demos please contact your regional sales manager or the Vauxhall Special Vehicles administration team for further details.

Please note all demonstrators are offered for resale after approximately six months service and can be reserved for future purchase.

# REMARKETING

A first for emergency vehicles

## HOW THE PROCESS WORKS:

We recognise that Fleet Managers are under increasing pressure to maximise efficiency and reduce the cost of sourcing vehicles. The decommissioning and remarketing of such vehicles can exert a particular drain on resources.

Our new Vehicle Remarketing Service can be tailored to your individual requirements, reducing your administrative burden while promoting the reuse of high value vehicle equipment.

- Fleet Manager contacts VSV advising vehicle ID to remarket
- VSV arranges collection and transports to decommissioning centre
- MoT and service carried out (if required)
- Unwanted parts removed and agreed items held for reuse or returned
- Repairs carried out, vehicle prepared for auction
- Vehicle auctioned
- Financial administration concluded



As well as providing a choice of options when it comes to preparing the vehicle for resale, we also offer a range of flexible administration and financial solutions. These can include the Fleet Manager retaining all existing administration duties and receiving the resale proceeds from auction or, alternatively, minimising direct involvement, with the resale proceeds used to discount the cost of new vehicles.

**To discuss the options in more detail please speak to your Vauxhall Special Vehicles Sales Manager.**

# RANGE DETAILS

## Fuel economy and emissions data\*

Official Government Environmental Data. Fuel consumption figures mpg (litres/100km) and CO<sub>2</sub> emissions.

Model	CO <sub>2</sub> (g/km)	Urban MPG (litres/100km)	Extra Urban MPG (litres/100km)	Combined MPG (litres/100km)
Corsa 5-door	139-82	35.3 (8.0)-83.1 (3.4)	57.6 (4.9)-94.2 (3.0)	47.1 (6.0)-91.1 (3.1)
New Astra Hatchback and Sports Tourer	142-88	35.3 (8.0)-74.3 (3.8)	55.4 (5.1)-91.1 (3.1)	45.6 (6.2)-85.6 (3.3)
Insignia Hatchback and Sports Tourer	186-99	25.9 (10.9)-62.8 (4.5)	45.6 (6.2)-85.6 (3.3)	35.8 (7.9)-74.3 (3.8)
Mokka	159-106	32.1 (8.9)-61.4 (4.6)	48.7 (5.8)-74.3 (3.8)	40.9 (6.9)-68.9 (4.1)
Combo	163-120	30.7 (9.2)-54.3 (5.2)	49.6 (5.7)-68.9 (4.1)	40.3 (7.0)-62.8 (4.5)
Vivaro	185-145	35.3 (8.0)-44.1 (6.4)	40.9 (6.9)-55.4 (5.1)	40.3 (7.0)-50.4 (5.6)
Movano	250-173	26.2 (10.8)-39.8 (7.1)	32.1 (8.8)-46.3 (6.1)	29.7 (9.5)-42.8 (6.6)

\*Whole range figures shown.

Official Government Test Environmental Data. Official EU-regulated test data are provided for comparison purposes and actual performance will depend on driving style, road conditions and other non-technical factors.



99



## **VAUXHALL SPECIAL VEHICLES CONTACTS**

### **Dick Ellam**

Manager Vauxhall Special Vehicles

Telephone: 07775 825415

### **Perry Clarke**

Sales Manager North

Telephone: 07940 547775

### **Mike Roberts**

Sales Manager South

Telephone: 07775 825351

### **Admin Team**

Telephone: 01582 409999

Email: [vsv@vauxhall.co.uk](mailto:vsv@vauxhall.co.uk)



**VAUXHALL**