

VX_VIV_27962

VIVARO

2018 Models Edition 2



VAUXHALL

BE THE BUSINESS.

When you're choosing a commercial vehicle, you need the right tool for the job. So welcome to our range, which includes four award-winning models Corsavan, Combo, Vivaro and Movano – with over 300 variations for every kind of job, from panel

vans, chassis cabs, crew cabs and platform cabs to box vans, tippers, dropsides and passenger carriers. Even better, our reliable, fuel-efficient vehicles are supported by a dedicated network of retailers across the UK, giving you expert help

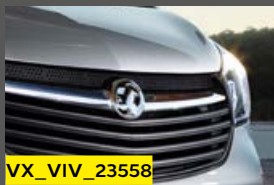


when and wherever you need it. And another thing – not only do we build more commercial vehicles than any other UK manufacturer (almost 60,000 built in the last year), we've won over 25 major awards since 2014, given by

the toughest judges in the industry. But what exactly does that mean for you? Well, it means you always know your van is made by the best in the industry, supported by professionals who care about doing a great job just as much as you.

Now isn't that the business?

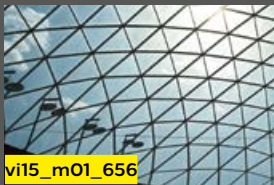




VX_VIV_23558



vi15_m01_655



vi15_m01_656



vi15_m01_657



VX_VIV_21526



vi15_m01_659



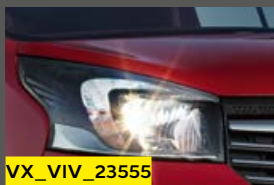
vi15_m01_660



vi15_m01_661



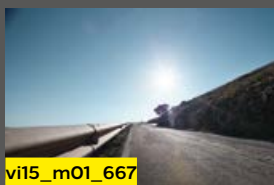
VX_VIV_23555



vi15_m01_664



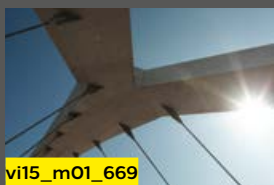
vi15_m01_666



vi15_m01_667



vi15_m01_668



vi15_m01_669



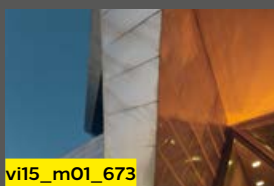
vi15_m01_670



vi15_m01_671



VX_VIV_23547



vi15_m01_673



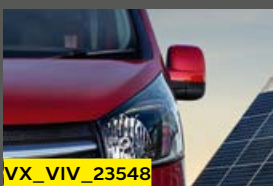
vi15_m01_675



vi15_m01_676



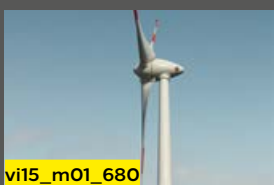
VX_VIV_23548



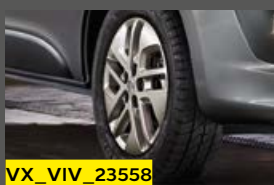
vi15_m01_678



vi15_m01_679



vi15_m01_680



VX_VIV_23558



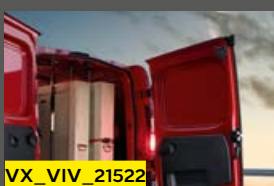
vi15_m01_682



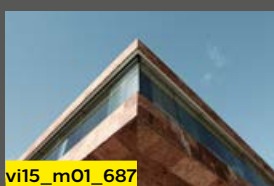
vi15_m01_683



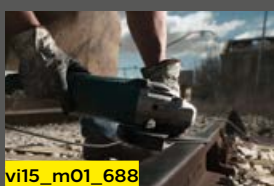
vi15_m01_685



VX_VIV_21522



vi15_m01_687



vi15_m01_688



VIVARO. BUILT TO TAKE IT ALL.

Since 2001 van production at the Luton plant has exceeded one million units and the Vivaro name continues its illustrious predecessor by moving the game on – big time! With bold styling, ultra-efficient engines and in-cab connectivity that turns the working environment into a mobile office – Vivaro is truly built to take it all.

Some of the vehicles shown include options and accessories available at extra cost. And not all of the features, options or accessories described are available on every model. For model and equipment availability please refer to the latest Commercial Vehicle Range Price and Specification guide, available to download from vauxhall.co.uk for details. From time to time we may also offer alternative models such as Special Editions which are featured in separate literature or can be found on the Vauxhall website: vauxhall.co.uk/vans

CONTENTS

VIVARO

Design and engineering	8
Functionality	10
Interior design	12
Practicality	14
Efficiency	16
Engines and transmissions	18
Vivaro bodystyles	20
H1 Panel Van features	22
H2 Panel Van features	24
Doublecab features	26
Platform Cab features	28
Vivaro Passenger Carriers	30
Cabin features	40
Infotainment	42
Safety and security	44
Vivaro model line-up	46
Options	52
Accessories	54
Colours and trims	56
British Superbike Championship	60
Customer testimonials	62

BUILT TO BE VERSATILE.





Vivaro

BUILT TO PERFORM.

Vivaro looks tough because it is tough.

It was designed to improve performance in every way. In Panel Van, Doublecab, Combi, Tourer and Platform Cab variants. And remember, it's built in Britain to the toughest standards so it's robust enough to take everything you can throw at it – and in it.



Designed to perform with a tough new look



Engineered to last



Built in Britain to the highest standards



Vivaro

BUILT TO WORK HARDER.

Well-equipped with a host of convenience features, Vivaro is built to work harder with intelligent cab design and is loaded with clever but practical ideas that help get the job done.



Practical ideas for maximum ease of use



Innovative cab design creates a virtual mobile office



Enhanced storage features assist your daily working routine





BUILT FOR THE LONG HAUL.

The Vivaro interior, a great place to be, all day long.

A well-designed driving environment means you sit comfortably, with everything you need right at your fingertips. Then there's an infotainment system, which means you're well connected and have all your entertainment at hand. On top of all that, the Vivaro is great to drive too.



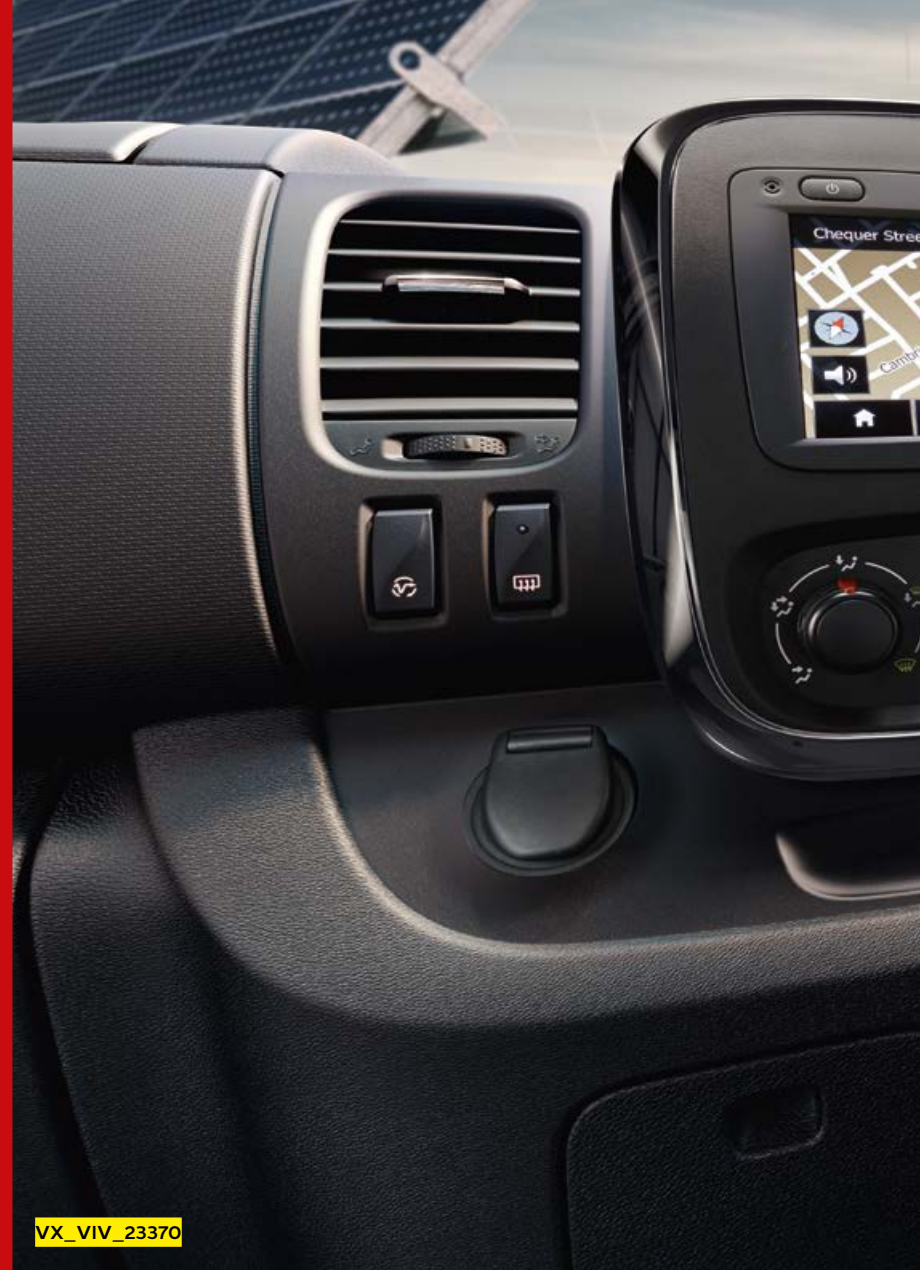
Enhanced cab design for total comfort and control



Great place to be, great to drive however long the journey



Stay in touch with high levels of infotainment and communication





BUILT TO BE MORE FLEXIBLE.

The efficient Vivaro doesn't only strike the perfect balance between performance and running costs. It also takes a more flexible approach to load carrying.

Combining a spacious cargo area volume and superb payload capacity with two wheelbase options, two roof heights and the availability of the FlexCargo bulkhead option, the Vivaro panel van can carry even challenging loads with ease.



FlexCargo bulkhead available for loads of up to 4150mm in length



Loadspace dimensions enable L1 models to hold 8ft x 4ft sheets



Payload capacity up to 1265kg*

*For an exact definition, please refer to the Glossary of Terms section within the Commercial Vehicle Range Price and Specification guide, available to download from vauxhall.co.uk





BUILT TO TAKE YOU FURTHER.

The robust Vivaro isn't just more efficient. Panel Van, Doublecab or Combi, it makes your whole business more efficient.

With its superb range of flexible and efficient turbo-diesel engines and our innovative ECO mode system, this is an altogether more cost-effective Vivaro with smooth power delivery allied to impressive economy and reassuringly low CO₂ emissions.

ecoTEC technology

- Help reduce fuel consumption to cut operating costs
- Achieve higher mileage with a lower carbon footprint

ECO mode

- Optimises key system settings
- Prompts more efficient driving

Start/Stop

- Saves fuel and reduces emissions
- Cuts/restarts the engine when appropriate





ENGINES.

Delivering more power combined with lower emissions and impressive fuel economy whatever model you choose, Vivaro's smaller displacement – but no less efficient – Turbo and BiTurbo diesel engines deliver the perfect mix of day-to-day performance and competitive fuel consumption. At the same time, our latest ECO system technology – allied to our proven Start/Stop functionality – ensures operating costs are held firmly in check.

BiTurbo engines

- Frugal, sequential twin-turbo system
- Lag-free acceleration at any speed
- 1.6 BiTurbo 125PS/145PS available with Start/Stop technology

Quiet, clean and efficient diesel engines

- Variable-displacement oil pumps reduce fuel consumption
- Low-maintenance chain-driven camshafts
- Multi-point fuel injection for low emissions and high performance
- Optimised thermal management increases efficiency

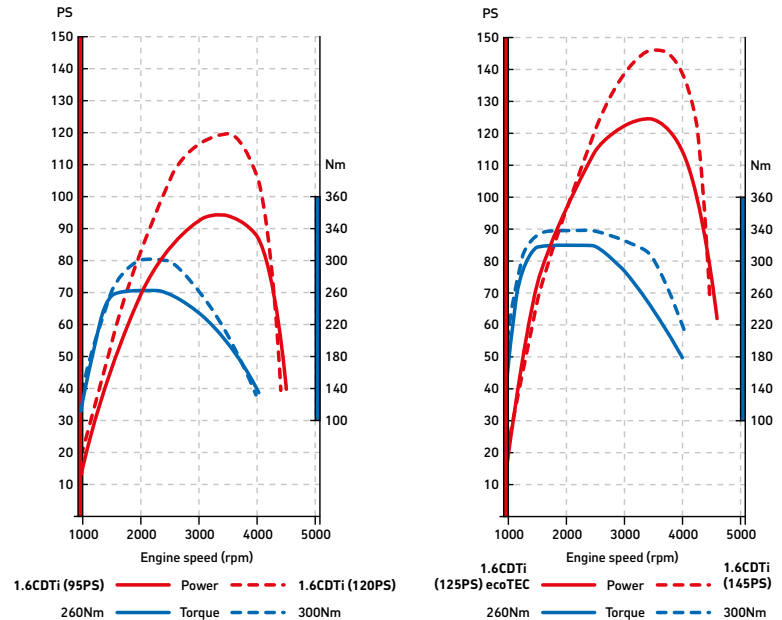
*Combi models. For details of Vivaro Panel Van and Doublecab models please refer to the technical data within the Commercial Vehicle Range Price and Specification guide, available to download from vauxhall.co.uk



VX_VIV_21588

Award-winning technology

With its superb range of flexible and highly economical turbo-diesel engines, this is an altogether more cost-effective Vivaro, with engines delivering up to 145PS and 340Nm, CO₂ emissions as low as 145g/km* and impressive fuel economy of up to 50.4mpg* (combined figure). Indeed, its sophisticated 1.6 litre BiTurbo CDTi with sequential turbocharging and twin-cooler system has already been presented with the prestigious Innovation Award in the Van Fleet World Honours 2014.



ENGINE DATA*

	Maximum power PS (kW) @ rpm	Maximum torque Nm (lb.ft.) @ rpm	Fuel economy mpg (litres/100km)#			CO ₂ emissions (g/km)
			Urban driving	Extra-urban driving	Combined figure	
Panel Van and Doublecab						
1.6CDTi (95PS)	95 (70) @ 3500	260 (192) @ 1500	35.3 (8.0) – 36.2 (7.8)	47.0 (5.9) – 48.7 (5.8)	42.1 (6.7) – 43.4 (6.5)	174 – 170
1.6CDTi (95PS) Start/Stop	95 (70) @ 3500	260 (192) @ 1500	38.7 (7.3) – 39.2 (7.2)	48.7 (5.8) – 50.4 (5.6)	44.8 (6.3) – 46.3 (6.1)	164 – 160
1.6CDTi (120PS)	120 (89) @ 3500	300 (221) @ 1750	35.3 (8.0) – 36.2 (7.8)	47.0 (6.0) – 48.7 (5.8)	42.1 (6.7) – 43.4 (6.5)	174 – 170
1.6CDTi BiTurbo (125PS) Start/Stop ecoTEC	125 (92) @ 3500	320 (236) @ 1500	38.2 (7.4) – 40.9 (6.9)	42.8 (6.6) – 51.4 (5.5)	40.9 (6.9) – 47.0 (6.0)	178 – 155
1.6CDTi BiTurbo (145PS) Start/Stop	145 (107) @ 3500	340 (251) @ 1750	39.2 (7.2) – 39.8 (7.1)	48.7 (5.8) – 50.4 (5.6)	44.8 (6.3) – 46.3 (6.1)	164 – 160
Combi and Combi+						
1.6CDTi (95PS) Start/Stop	95 (70) @ 3500	260 (192) @ 1500	41.5 (6.8)	52.3 (5.4)	47.1 (6.0)	155
1.6CDTi BiTurbo (125PS) Start/Stop ecoTEC	125 (92) @ 3500	320 (236) @ 1500	42.1 (6.7) – 44.1 (6.4)	54.3 (5.2) – 55.4 (5.1)	49.6 (5.7) – 50.4 (5.6)	149 – 145
Tourer						
1.6CDTi BiTurbo (125PS) Start/Stop ecoTEC	125 (92) @ 3500	320 (236) @ 1500	41.5 (6.8)	53.3 (5.3)	48.7 (5.8)	152
1.6CDTi BiTurbo (145PS) Start/Stop	145 (107) @ 3500	340 (251) @ 1750	40.9 (6.9)	51.4 (5.5)	47.1 (6.0)	156
Platform Cab						
1.6CDTi BiTurbo (125PS) Start/Stop ecoTEC	125 (92) @ 3500	320 (236) @ 1500	37.7 (7.5)	42.2 (6.7)	40.4 (7.0)	181
1.6CDTi BiTurbo (145PS) Start/Stop	145 (107) @ 3500	340 (251) @ 1750	37.7 (7.5)	42.2 (6.7)	40.4 (7.0)	181

*For more detailed technical data, please refer to the Commercial Vehicle Range Price and Specification guide, available to download from vauxhall.co.uk

#Fuel consumption information is official government environmental data, tested in accordance with the relevant EU directive. Official EU-regulated test data is provided for comparison purposes and actual performance will depend on driving style, road conditions and other non-technical factors.



VX_VIV_23551

VERSATILITY IN ACTION.

With a choice of four bodystyles,
Vivaro offers an option to suit every
van operator.

The Vivaro is available in the following variants:

- Panel Van – two lengths, two heights
- Doublecab – two lengths
- Combi – two lengths
- Tourer – two lengths
- Platform Cab



WEIGHTS AND LOADSPACE DIMENSIONS*

Vivaro body versions	Maximum GVW (kg)	Maximum payload (kg)	Maximum loadspace volumes (VDA method)	Maximum load floor lengths (mm)	Maximum load area width (mm)	Width between wheel arches (mm)	Maximum load area heights (mm)	Maximum rear door aperture heights (mm)	Rear door aperture width at floor (mm)	Loading height (unladen) (mm)	Sliding side-access door aperture height (mm)	Sliding side-access door aperture width (mm)
Panel Van												
L1 H1 2700	2820	1060 – 1062	5.2	2537	1662	1268	1387	1320	1391	552	1284	1030
L1 H1 2900	2980	1220 – 1222	5.2	2537	1662	1268	1387	1320	1391	552	1284	1030
L1 H2 2900	2980	1143	7.2	2537	1662	1268	1898	1820	1391	552	1284	1030
L2 H1 2900	3040	1265	6.0	2937	1662	1268	1387	1320	1391	552	1284	1030
L2 H2 2900	3070	1185	8.6	2937	1662	1268	1898	1820	1391	552	1284	1030
Doublecab												
L1 H1 2900	2844	974	3.2	2023	1662	1268	1387	1320	1391	552	1284	1030
L2 H1 2900	2950	1025	4.0	2423	1662	1268	1387	1320	1391	552	1284	1030
Combi/Combi+												
L1 H1 2900	3030	1088 – 1129	1.0 – 3.2	736	1662	1268	1387	1320	1391	552	1284	1030
L2 H1 2900	3030	1069 – 1132	1.8 – 4.0	1136	1662	1268	1387	1320	1391	552	1284	1030
Tourer												
L1 H1 2700	2955	961	N/A	N/A	N/A	N/A	N/A	1320	1391	552	1284	1030
L2 H1 2700	3030	1004	N/A	N/A	N/A	N/A	N/A	1320	1391	552	1284	1030

*For details of weights and loadspace dimensions please refer to the technical data and Glossary of Terms sections within the Commercial Vehicle Range Price and Specification guide, available to download from vauxhall.co.uk

VARIANTS

Panel Van

VX_VIV_21593



L1 H1

VX_VIV_21594



L1 H2

VX_VIV_21595



L2 H1

VX_VIV_21596



L2 H2

Doublecab

VX_VIV_21597



L1 H1

VX_VIV_21598



L2 H1

Combi/Combi +/Tourer Elite

VX_VIV_21599



L1 H1

VX_VIV_21600



L2 H1

Platform Cab

VX_VIV_21601



L2 H1



Vivaro

H1 PANEL VAN.

Versatility and flexibility in equal measure. Whatever you need, the Vivaro has it all.

Access and loadspace features include:

- Choice of two wheelbases
- Easy-access, 1m-wide nearside sliding side-loading door
- Full-height steel bulkhead
- Unglazed rear doors (90/165° opening)
- Illuminated load area
- 12-volt electrical accessory socket in load area
- Side and rear doors take a Euro pallet with ease
- Up to 6.0cu.m (211.9cu.ft.) max. loadspace volume
- 2537mm or 2937mm standard load floor lengths
- FlexCargo bulkhead extends loadspace length to up to 4150mm (standard on Sportive/Limited Edition models only)
- Floor-mounted, load-securing eyes
- Payload capacity up to 1265kg*

*For an exact definition, please refer to the Glossary of Terms section within the Commercial Vehicle Range Price and Specification guide, available to download from vauxhall.co.uk

Not all features and options are available on every model. Please refer to the equipment section within the Commercial Vehicle Range Price and Specification guide, available to download from vauxhall.co.uk



1. Euro-pallet friendly. Specifically designed to carry Euro-pallets, Vivaro can accommodate up to three pallets, even on L1 models. Assisted by easy side access, the generous 1.2m width between the rear wheel arches also makes the new van suitable for carrying wide loads such as 8ft. x 4ft. plywood sheets.

2. Flexible loadspace. Standard on Sportive/Limited Edition and optional on Panel Van models, the FlexCargo bulkhead allows loads of up to 4150mm in length to be accommodated with ease.



Vivaro

H2 PANEL VAN.

More loadspace for maximum versatility makes light work of bulky loads.

Access and loadspace features include:

- Versatile 1898mm maximum load height
- Choice of two wheelbases
- Easy-access, 1m-wide nearside sliding side-loading door
- Full-height steel bulkhead
- Unglazed rear doors (90/165° opening)
- Illuminated load area
- 12-volt electrical accessory socket in load area
- Side and rear doors take a Euro pallet with ease
- Up to 8.6cu.m (303.7cu.ft.) max. loadspace volume
- 2537mm or 2937mm standard load floor lengths
- FlexCargo bulkhead option extends loadspace length to up to 4150mm
- Floor-mounted, load-securing eyes
- Payload capacity up to 1185kg*

*For an exact definition, please refer to the Glossary of Terms section within the Commercial Vehicle Range Price and Specification guide, available to download from vauxhall.co.uk

Not all features and options are available on every model. Please refer to the equipment section within the Commercial Vehicle Range Price and Specification guide, available to download from vauxhall.co.uk



1. Full standing height. Extra height, easy access and plenty of space means the Vivaro H2 versions not only carry larger loads, they also make the perfect mobile workshop.



DOUBLECAB.

The Doublecab matches practical and comfortable crew transport to excellent loadspace and payload.

Access and loadspace features include:

- Choice of two wheelbases
- Twin sliding side-access doors with fixed windows
- Up to 4.0cu.m (141.3cu.ft.) max. loadspace volume
- High-strength ABS plastic bulkhead with window
- Half-height sidewall trim with storage pocket
- Three-passenger rear bench seat
- Bench seat with additional storage, armrests, ISOFIX child seat restraint system on outer seats and 12-volt electrical accessory socket (Sportive models only)
- Unglazed rear doors (90/165° opening)
- Glazed rear doors or glazed tailgate (optional)
- Heated rear window and wash/wipe (optional)
- Rear doors take a Euro pallet with ease
- 1340mm or 1740mm standard load floor lengths
- Additional loadspace under rear bulkhead extends loadspace length to up to 2423mm (L2 models)
- Floor-mounted load restraint lashing eyes
- Payload up to 1025kg*

*For an exact definition, please refer to the Glossary of Terms section within the Commercial Vehicle Range Price and Specification guide, available to download from vauxhall.co.uk

Not all features and options are available on every model. Please refer to the equipment section within the Commercial Vehicle Range Price and Specification guide, available to download from vauxhall.co.uk



1. Twin sliding side-access doors. The extra-wide door opening ensures easy passenger access while the individually-contoured rear bench seat accommodates up to three passengers in complete comfort with excellent leg room and raked rear seat backs.

2. and 3. Loads of loadspace. There's instant access to underseat storage in the passenger section, plus up to 4.0cu.m of usable loadspace.





PLATFORM CAB.

The Vivaro Platform Cab provides the perfect base for specialist conversions that require low floor and walk-through access from the cab.

Key features include:

- Maximum GVW of 3030kg
- Versatile long wheelbase of 3498mm
- Comprehensive comfort and safety equipment
- Optional extended-length wiring loom
- Payload up to 1474kg*

*For an exact definition, please refer to the Glossary of Terms section within the Commercial Vehicle Range Price and Specification guide, available to download from vauxhall.co.uk

BUILT FOR YOU. MADE FOR EVERYONE.

When we designed our Vivaro passenger carrier range, we got a bit carried away (which is only fitting really).

As well as you, we thought about every kind of person and group who might travel in a Vivaro, from large families, adventurers and sports clubs to business executives, VIP passengers and specialist teams.

So we made a Vivaro for all kinds of jobs and journeys, each kitted out with creature comforts, smart safety technology and flexible arrangements to match the ride to different needs.

Comprising the Vivaro Combi, Combi+ and Tourer Elite, our passenger carrier range features the availability of conveniences like keyless open and start and a rear-view camera through to multiple body variations and trims that adapt completely to diverse tasks.

So, whether you need a van for the family, a mobile executive office or the perfect partner for sports and outdoor adventures, the can-do Vivaro is made for you.





VX_VIV_27969



COMBI.

Combi is ideal for all kinds of day-to-day passenger transport, from staff and club members, to construction crews and taxi customers. Made for practical working days, it comes with plenty of space for kit, tools and luggage, with flexible, accessible seating so everyone's comfortable.

Combi standard features include:

- Nine-seat configuration with choice of two wheelbases
- Twin sliding side-access doors with fixed windows
- Three-passenger second and third-row bench seats
- 60/40 split-folding seat back for second-row bench seat
- Fold and tumble facility for third-row bench seat
- Removable second and third-row bench seats
- Inertia-reel lap and diagonal seatbelts for all seats
- Glazed tailgate with heated rear window and wash/wipe facility
- Rubber floor covering
- Half-height sidewall trim
- Load restraint lashing eyes for load area

Not all features and options are available on every model. Please refer to the equipment section within the Commercial Vehicle Range Price and Specification guide, available to download from vauxhall.co.uk



1. Second-row split-folding rear seat. The easy-to-operate split-folding seat back allows convenient access for third-row passengers.

2. Nine-seater comfort. Combi offers comfortable seating for up to eight passengers.

3. and 4. Additional comfort. Optional rear air conditioning controls and a separate rear heater are also available for Combi.

VX_VIV_28029



COMBI+.

When you need to arrive in style, the Combi+ adds a touch of elegance making it ideal for more formal settings and occasions where a smart impression is important – for example, private hire companies, hotel and airport shuttles, and corporate travel.

Standard features over and above include:

- Air conditioning for cab and saloon
- Chilled glovebox facility
- Auxiliary heater
- Selective door locking with two three-button keys and integral remote
- One-touch facility for electrically operated windows
- Cruise control with speed limiter
- Leather-covered steering wheel
- Dark-tinted rear glazing
- Front fog lights
- Body-colour bumper
- Twin sliding side-access doors with sliding windows
- Black Connect embossed cloth seat trim
- Dual front passengers' seat with underseat storage
- Full-height interior trim
- Full-diameter wheel trims

Not all features and options are available on every model. Please refer to the equipment section within the Commercial Vehicle Range Price and Specification guide, available to download from vauxhall.co.uk



1. Interior comfort. For a more premium look and feel, Combi+ seats feature embossed cloth trim with fully-trimmed interior door panels and full height side wall trim.

2. Second sliding door. It's so much easier for people to access the second and third seat rows with a second sliding door – your passengers will thank you for it.

3. and 4. Air conditioning. Keep your passengers comfortable and reduce condensation with the Combi+'s air conditioning system.

BUILT TO WORK YOUR WAY.



VX_VIV_27970

Available in a choice of short and long wheelbase models, both the Combi and Combi+ models give you the perfect blend of passenger carrying and load carrying with superb comfort and storage options.

While the Combi offers excellent transportation for more utilitarian purposes (like work crews), the Combi+ adds upmarket comfort and wellness features, making it suitable for smarter, more formal transport duties.

1



2



1. Transport for up to eight passengers. With maximum versatility assured through a mix of foldable, removable seating configurations, Combi and Combi+ provide transport for up to eight passengers, making the Combi models ideal for carrying people at all kinds of work or play.

2. Rear seat combinations. With its tumble and fold or removable third-row seating, both Combi and Combi+ can accommodate a mix of passengers and luggage with ease.

3. Spaciously adaptable. Generously proportioned rear sliding doors make Combi and Combi+ easy to enter and exit, heightening the model's potential as a courtesy vehicle. And, with the second and third-row seats removed, the Combi can even double as a conventional panel van, if needed.

VX_VIV_27973

WILSON
Hotel

Terminal One



TOURER ELITE.

Designed for the perfect arrival, the Vivaro Tourer Elite is an ideal choice for large modern families and executive travellers, being designed with VIPs in mind (whether they're your children or your company board!).

Tourer Elite Standard features include:

- Electronic climate control (ECC)
 - ECC front (first-row) and air conditioning rear (second-/third-rows)
- Chilled glovebox facility
- Auxiliary heater
- Automatic lighting control
- Rain-sensitive windscreen wipers
- Six airbags
- Leather seat trim with heated front seats
- Single front passenger's seat
- Navi 50 IntelliLink infotainment system
- FlexDock for smartphone
- Two adjustable, swivel chairs in second-row
- Three passenger third-row bench seat
- LED daytime running lights
- Rear-view camera
- Rear parking distance sensors
- 17-inch silver alloy wheels with 215/60 R 17 tyres

Not all features and options are available on every model. Please refer to the equipment section within the Commercial Vehicle Range Price and Specification guide, available to download from vauxhall.co.uk

VX_VIV_27974



VX_VIV_27975



VX_VIV_27976



VX_VIV_27999

1. Swivelling rear seats. Tourer Elite's seating works on a floor rail system, so that seats can be easily moved and secured, and also swivelled to face each other for more social travelling arrangements.

2. Folding table. Available as an aftersales accessory the table slides out on rails and easily unfolds, to complement the rear seating arrangements (table can be slid and stowed away after use).

3. LED ceiling lighting. Energy efficient LED ceiling lights illuminate the cabin for passengers.

4. Electronic climate control. Keep your VIP passengers relaxed and comfortable with the EEC and air conditioning.

WELCOME TO YOUR OFFICE.

Vivaro's interior reflects Vauxhall's understanding of the challenges faced by van operators in their daily working lives. Comfort and control levels are optimised right across the cab, along with enhanced infotainment connectivity. Premium quality materials are used throughout for improved appearance, durability and owner appeal. Finally we've improved the interior ergonomics across the van, further enhancing the interface between driver and vehicle.

Fold-flat centre front passenger seat. The centre section of the fold-flat front passenger seat features a handy clipboard holder which can also be removed when necessary, leaving a handy, solid and flat surface. The unit also flips forward to create a lidded work surface, with hidden, secure storage for work paraphernalia – eg. maps, handbooks, general documentation – along with an additional drinks holder. The folding process takes just seconds. Standard on Sportive and Limited Edition, optional on standard Panel Van models.





VX_VIV_23368



VX_VIV_21871



VX_VIV_21540



VX_VIV_21869

1. Aux-in and USB. All Vivaro models feature aux-in and USB ports enabling drivers to connect their mobile devices and access a wide range of multi-media files. An additional USB port* is fitted in the upper fascia of some models to enable the charging of mobile phones and MP3 devices.

2. The Vivaro fascia features nine storage spaces, providing more than 24 litres of storage volume in total. Highlights include a large, usable glovebox, upper fascia storage, three drinks holders and a handy driver's storage pocket.

3. The clipboard itself can be securely fastened in two positions, easily visible to either the driver or passenger. It's suitable for documents up to A4 in size, including contracts, invoices and general day-to-day paperwork.

4. Generous door pockets provide useful stowage space for maps, documents and other essential workday items.

*Not available on Navi 50 or 80 models.

ENHANCED CONNECTIVITY.

With enhanced infotainment connectivity, Vivaro is, quite simply, one of the best-connected vans on the market!

Vivaro models offer:

- Bluetooth® connectivity and USB for smart phones and MP3 players
- Digital radio
- Steering column-mounted audio and telephone controls
- Aux-in socket
- Optional satellite navigation systems

1. NAVI 50 IntelliLink. Specifically tailored to the cab environment, the NAVI 50 IntelliLink unit provides drivers with an accurate and affordable navigation option with map coverage for Western or Eastern Europe with Traffic Message Channel (TMC). Key features include a 7-inch colour touchscreen, Bluetooth® connectivity, steering wheel mounted controls and MP3/WMA playback from USB and Bluetooth® audio streaming. When connected to an Apple iPhone NAVI 50 also supports Siri voice control and displays information about the music you are playing.





VX_VIV_21544



VX_VIV_21545



VX_VIV_21591



VX_VIV_21592



VX_VIV_23372

2. NAVI 80 IntelliLink. The intuitive, top-of-the-range system with 3-D viewing, integrated voice control, USB video player/photo reader and TomTom LIVE services till 2020 without charge for real-time traffic information. The 7-inch display also shows the view for the optional rear-view camera.

3. R 16 BT USB. The entry-level system offers exceptional functionality featuring Bluetooth® and USB connectivity as well as digital radio as standard.

4. CD 18 BT USB. The CD 18 BT USB features the same specifications as the R 16 BT USB but adds a CD player and is configured in the double-DIN format.

5. Tablet docking station. Compatible with the R 16 BT USB, this facility allows tablets between 4.8 and 10.6 inches to be securely fixed in place for ease of use.

6. Smartphone docking station. This feature allows smartphones of up to a 4.7-inch screen size to be securely mounted within easy sight and perfect reach. Power is taken from the upper USB socket on the fascia.

SAFETY AT WORK.



Safety and security in the workplace and out on the road are key concerns for any business and Vivaro is no exception. While many of its advanced active and passive protection features will be reassuringly familiar to Vauxhall drivers, the Vivaro is more safe and secure than ever. Standard safety

equipment includes the very latest Electronic Stability Programme (ESP-plus) with integrated traction control, roll-over mitigation and hill-start assist, anti-lock braking system with electronic brakeforce distribution and emergency brake assist.



- 1. Optional rear-view camera.** Activated automatically when reverse gear is selected, the system provides clear rearward vision by displaying in the rear-view mirror.
- 2. Wide-angle blind spot mirror.** Located in the passenger sunvisor, it provides additional visibility.
- 3. Selective door locking.** Allows the cab area to be unlocked independently of the load compartment, and vice versa, reducing the opportunities for theft. Standard on Sportive, optional on other models.
- 4. Keyless entry and start.** Operated via a key card that slots into the fascia. Doors can be opened remotely via the key card and the engine is stopped and started via a button on the centre console. Optional on Start/Stop models.
- 5. ESP-plus with integrated roll-over mitigation.** This system senses when the vehicle departs from the driver's chosen path. The roll-over mitigation feature constantly monitors the vehicle's behaviour and intervenes when it threatens to lean to one side, to help stabilise the vehicle.

VIVARO.

Vivaro models open their account with a generous level of equipment that puts many rival models to shame.

Standard features include:

- Electronic stability programme with traction control
- Electrically operated front windows
- Electrically adjustable/heated door mirrors
- Remote control central deadlocking
- ABS with electronic brakeforce distribution
- ECO mode
- Electronic engine deadlock immobiliser
- Full-height steel bulkhead (Panel Van only)
- Wide-angle blind spot mirror
- Six-way adjustable driver's seat with height adjustable armrest and lumbar adjustment
- Steering column adjustable for reach and rake
- Multi-function trip computer
- R 16 BT USB digital radio/AM/FM stereo radio
- Bluetooth® connectivity – USB and aux-in facility
- Steering wheel mounted audio and phone controls
- Illuminated glovebox
- Facia-mounted drinks holders
- Blue Tricess cloth seat trim
- Driver's airbag
- Dual front passengers' bench seat
- 16-inch wheels



VX_VIV_21570

MODEL AVAILABILITY	L1 H1		L1 H2		L2 H1		L2 H2	
	2700	2900	2700	2900	2700	2900	2700	2900
Panel Van	•	•	–	•	–	•	–	•
Doublecab	–	•	–	–	–	•	–	–
Combi	–	•	–	–	–	•	–	–
Platform Cab	–	–	–	–	–	•	–	–



VX_VIV_27481

L1 H1 2700 model illustrated features Flame Red brilliant paint, optional at extra cost.

VIVARO SPORTIVE.

Sportive models build on the generous specification of the standard van with many added features, enhanced style accents and even greater levels of comfort.

Additional features over and above standard models:

- Body-colour front bumper
- Body-colour rear quarter bumpers
- Air conditioning with air recirculation (cab only)
- FlexCargo bulkhead
- Dual passenger bench seat with fold-flat centre section featuring storage tray and dual position clipboard facility (not Doublecab models)
- Cruise control with speed limiter
- Selective door locking
- Three-button key
- Rear parking distance sensors
- CD 18 BT USB CD/MP3 CD player/digital radio/stereo radio
- Black Connect embossed cloth seat trim
- Leather-covered steering wheel and gear knob
- LED daytime running lights
- Front fog lights with chrome surround
- Full-diameter wheel trims
- Brilliant paint/two-coat metallic paint



VX_VIV_21543

MODEL AVAILABILITY	L1 H1		L2 H1	
	2700	2900	2700	2900
Panel Van	•	•	–	•
Doublecab	–	•	–	•

The air conditioning in vehicles with N1, N2 or M2 type approval relies upon fluorinated greenhouse gases (R134a) for its functioning. The front system contains a quantity of overall 580g of R 134a, which corresponds to a CO₂ equivalent of 0.83 tons. The front and rear system in versions with up to 9-seats contains a quantity of overall 1,100g of R 134a, which corresponds to a CO₂ equivalent of 1.57 tons. The front and rear system in versions with more than 16-seats contains a quantity of overall 1,700g of R 134a, which corresponds to a CO₂ equivalent of 2.43 tons. The global warming potential amounts to 1430. Information acc. to R (EU) No. 517/2014.



VX_VIV_27946

L1 H1 Sportive 2900 model illustrated features Sight and Light Pack, optional at extra cost. Flame Red brilliant paint is a no-cost option.

VIVARO LIMITED EDITION NAV.

The ultimate Vivaro designed to look good and work hard with a standard features list that's the business in more ways than one.

Additional features over and above

Sportive models:

- Body-colour front and rear bumpers, chrome front grille highlights, side-protection mouldings, exterior mirror housings, sliding side-access door rail cover and rear light cluster surrounds
- Automatic lighting control
- Rain-sensitive windscreen wipers
- 17-inch 5-spoke alloy wheels
- Unique vehicle graphics
- NAVI 50 IntelliLink infotainment system with the following features:
 - Satellite navigation
 - 7-inch colour touchscreen
 - Digital radio and AM/FM stereo radio with 12-station presets
 - Aux-in socket and USB connection
 - Bluetooth® connectivity
- FLEXDOCK – smartphone docking station



MODEL AVAILABILITY	L1 H1		L2 H1	
	2700	2900	2700	2900
Panel Van	•	–	–	•
Doublecab	–	•	–	•



VX_VIV_27478

VX_VIV_27479

L1 H1 Limited Edition NAV 2900 Doublecab (left) and L1 H1 Limited Edition NAV 2700 Panel Van (right) models illustrated.

OPTIONS.

Vivaro offers a range of options and option packs to suit every need. For more information please speak to your Vauxhall Commercial Vehicle retailer.

Safety and security

- Front passengers' airbag with deactivation switch

Interior

- Single front passenger's seat adjustable for height, reach and rake with armrest and lumbar adjustment
- Air conditioning with air recirculation facility (cab and rear passenger area), with auxiliary heater – Combi models

Exterior

- Front fog lights
- Rear parking distance sensors
- Rear parking distance sensors with rear-view camera
- Tow bar with 13-pin electrics (includes trailer stability programme). Does not suit trailers with LED lights*
- Dark-tinted rear windows

Load area

- Offside sliding side-access door
- Nearside and offside glazed sliding side-access doors
- Nearside and offside glazed sliding side-access doors with sliding windows

*For trailers with LED lights use Genuine Vauxhall Accessory tow bars which also include trailer stability programme.

Not all features and options are available on every model. Please refer to the equipment section within the Commercial Vehicle Range Price and Specification guide, available to download from vauxhall.co.uk



VX_VIV_23550



VX_VIV_26267



VX_VIV_23621



VX_VIV_26189

1. Sportive appearance package.

The Sportive can be specified with a complete body-colour package:

- Body-colour rear bumper insert
- Body-colour side mouldings and exterior mirror housings
- Body-colour rear light cluster surrounds
- Body-colour sliding door rail cover
- Chrome front grille highlights

2. and 3. Rear door options:

- Glazed rear doors, 90/165° opening
- Unglazed rear doors, 270° opening (L2 H1 models only)
- Glazed tailgate with wash/wipe facility (not available on H2 models) Glazed rear doors mandate glazed bulkhead.

4. Load area protection. A range of options are available to help protect loads and safeguard the interior:

- Resin-coated 9mm laminate plywood load floor covering
- Full-height lightweight 4.7mm plastic honeycomb load lining panels and wheel arch projection
- Resin-coated laminate plywood wheel arch protection.



VX_VIV_21545



VX_VIV_23369



VX_VIV_21881

5. Climate and Cruise Pack. Air conditioning with air recirculation (cab only), CD 18 BT USB, cruise control.

6. Optional rear-view camera. Provides clear rearward vision by displaying in the rear-view mirror.

7. Bulkheads. Vivaro can be specified with a full steel or glazed bulkhead.

ACCESSORIES.

Vauxhall options and accessories are all about choice – selecting your Vivaro then personalising it to suit the way you work.

There's a comprehensive range of Genuine Vauxhall Accessories all designed and manufactured to the same exacting standards as the van itself.

We've only shown a selection of what's available here; for the complete range please contact your local retailer for further information.

1. Roof carrier system. The base roof carrier system can be fitted with a steel roof rack complete with loading roller to help manoeuvre and secure goods on the roof easily and safely. A steel loading ladder and roof walkway are also available.



VX_VIV_26268



2. Base carrier. The sure-fire way to fasten long or awkward loads to the roof. The base carrier works best with a roof rack, ladder clamp, loading bars and load stop.

3. Splash guards. The essential accessory designed to protect the lower bodywork against stone chips, grit and other road material.

4. Tow bars. Available in a choice of fixed or detachable, ball, jaw or pin design, Vivaro's tow bars are available for a trailer load of up to 2000kg.

5. Load area protection. Full-height plywood load lining and wheel arch protection help safeguard the loadspace area.

6. Interior roof rack. Utilises the normally unused space under the vehicle roof to enable the loading of bulky items safely inside the load area.

7. Load area entry guard. Covers and protects the rear bumper when loading and unloading.

EXTERIOR COLOURS.

Stylish hard-working vans deserve a striking paint scheme to match.

SOLID



VX_VIV_27996

Glacier White



VX_VIV_27985

Ink Blue*

BRILLIANT**



VX_VIV_27995

Flame Red



VX_VIV_27993

Spring Green



VX_VIV_27994

Iron Grey

Non-representative models illustrated for colour only. Due to the limitations of the printing process, the colours reproduced may vary from the actual colour. As a result they should be used as a guide only. Please note: Certain alternative colours are available for special order on Vivaro. Restrictions apply so please consult your Commercial Vehicle retailer for more details.

TWO-COAT METALLIC**



VX_VIV_27992

Panorama Blue



VX_VIV_27991

Midnight Black



VX_VIV_27990

Cassiopeia Silver



VX_VIV_27986

Comete Grey†



VX_VIV_27989

Copper Brown



VX_VIV_27988

Jasper Brown



VX_VIV_27987

Platinum Silver

*Not available on Sportive, Limited Edition, Combi+ or Tourer models or in conjunction with Appearance Packs.

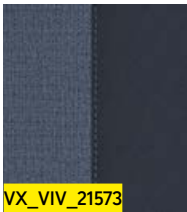
**Optional at extra cost. No-cost option on Sportive and Limited Edition.

†Tourer models only.

INTERIOR TRIMS.

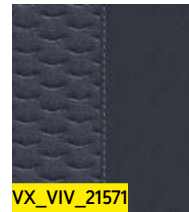
A smart van interior says a lot about your business.

BLUE TRICISS – STANDARD MODELS



Blue Triciss cloth seat insert.

BLACK CONNECT – COMBI+ / SPORTIVE / LIMITED EDITION NAV MODELS

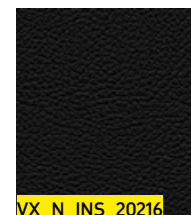


Black Connect embossed cloth seat insert.

BLACK LEATHER - TOURER ELITE



VX_VIV_27997



VX_N_INS_20216

Leather
seat trim.

BRITISH SUPERBIKE CHAMPIONSHIP.

To celebrate Vauxhall's sponsorship of the 2017 MCE British Superbike Championship two new concept vans were specially-designed. The Vivaro and Movano Race Van Concepts have been displayed throughout the 2017 BSB season.

Vivaro Race Van Concept

The Vivaro Race Van Concept was designed to function as a mobile workshop supporting any number of trade professionals. On a non-working day it can be easily-transformed to support track-day or even off-road motorcycling.

The cargo layout is well-considered and flexible with the offside featuring a combination of fixed racking and removable lightweight mobile workstations. The nearside features a folding shelf system to store additional kit.

There are also a number of built-in comfort features including a fold-down bench seat on the bulkhead, microwave, refrigerator and a 32-inch Smart TV.

Movano Race Van Concept

The Movano Race Van Concept was designed with the purpose of providing support and transport for the smaller motorcycle racing teams.

The cargo layout on the Movano features a permanent approach with the offside featuring a combination of fixed workbench and racking. The toolboxes within the workbench can also be removed. The nearside features the same folding shelf system. In addition, the Movano Race Van Concept features a retractable awning that provides an enclosed all-weather workspace adjacent to the van. A number of built-in comfort features include a fold-down bench seat on the bulkhead, microwave, refrigerator, wash basin and a 40-inch Smart TV.





VAUXHALL COMMERCIAL VEHICLES. BE THE BUSINESS.

Whatever your load, Vauxhall Commercial Vehicles are designed to help you deliver a top quality job. Our award-winning line-up can actively enhance the operating



**Jonathan Mounsey,
Managing Director of
JD Mounsey Ltd, said...**

'The plan is to become a 100 per cent Vauxhall Fleet. There's no better combination of residual value, low running costs and reliability. They do the job.'



efficiency of your business by delivering outstanding load-carrying potential, low running costs and day-long driver comfort. Whichever Vauxhall Commercial Vehicle you choose, you can also rest assured that Vauxhall's nationwide network of retailers will go the extra mile to meet all your servicing and

maintenance needs. But why take our word for it? Vauxhall's commitment to keeping your business moving is recognised by van operators of all sizes across the length and breadth of the country...



Mike Sinclair, Senior Property Partner, Aberdeen Considine said...

'Our fleet of 23 Corsavan Sportives is a reflection on our business, reinforcing our professional image. Not only that, we've found them economical, reliable and fun to drive.'



VX_N_COM_19409

Richard Fox, Managing Director of ITE Projects said...

'We rely totally on our vehicles to ensure we are available 24/7 to service our customers' critical requirements. The Combo van is proving to be as reliable as we are.'



VX_N_MOV_15980

Russell Lelliot, Managing Director, RSL Transport said...

'We've been running Movanos for years. Our two new Movanos save around 4mpg when full, compared to the old models. Which over almost 3,000 miles per week per van, is a big saving!'

Trust Vauxhall

Fleet Customer Services

Our dedicated support services for fleet managers include factory demonstrators and information on whole life costs, company car and van taxation and finance. For further information please call **0330 587 8222**.

For more information...

For a brochure on any Vauxhall model (up to a maximum of three per caller) or location of your nearest retailer, call **0345 600 1500**.

Alternatively, details can be found on our website at: **vauxhall.co.uk/vans**

To Find a Commercial Vehicle Retailer

Please visit: **vauxhall/vans**

Join us online:



Some feature descriptions in this brochure may refer to, and some illustrations may show, optional equipment not included in the standard delivery. The information contained in this brochure was accurate at the time of going to print. We reserve the right to make changes in design and equipment. The colours printed in the brochure only approximate actual colours. Illustrated optional equipment is available at extra charge. Availability, technical features and equipment provided on our vehicles, can vary by model. For precise information on the equipment provided on our vehicles, please contact your local Vauxhall Retailer. As part of Vauxhall's policy of environmental care, this brochure is printed on paper manufactured using Elemental Chlorine Free pulps from specially farmed, sustainable timber resources.

VAUXHALL

vauxhall.co.uk/vivaro

LT00151379 ©2018 Vauxhall Motors Limited

Published February 2018 Vauxhall Motors Limited