

ADAM ENERGISED



VAUXHALL
British Brand since 1903

IT'S READY when you are

With a choice of eight vivid tones, you bring your individuality to ADAM ENERGISED Special Edition, and it comes ready with smooth black accents and sporty 17-inch Hurricane alloys. Why not jazz it up even more by adding dark-tinted rear windows* and cool LED lights front and rear?*

Powered by a super punchy 1.2i (70PS) engine with a five-speed manual transmission, ADAM ENERGISED totally lives up to its name. Eager to get on the road, you'll find it a drive to explore your wild side.

*Optional at extra cost.

Win admirers with the lean, mean looks of ADAM ENERGISED.

- 1 17-inch high-gloss black Hurricane alloy wheels
- 2 Black Jack roof
- 3 High-gloss black front grille bar
- 4 Black Jack door mirrors

Optional* extras include:

- 5 Dark-tinted rear windows
- 6 LED daytime running lights and LED tail lights

Orange Alert
- Solid

Saturday White Fever
- Brilliant

Red 'n' Roll
- Brilliant

White my Fire
- Brilliant

Shades of Grey
- Metallic

Red Hot Chilli
- Metallic

Black Jack
- Metallic

Let it Blue
- Premium





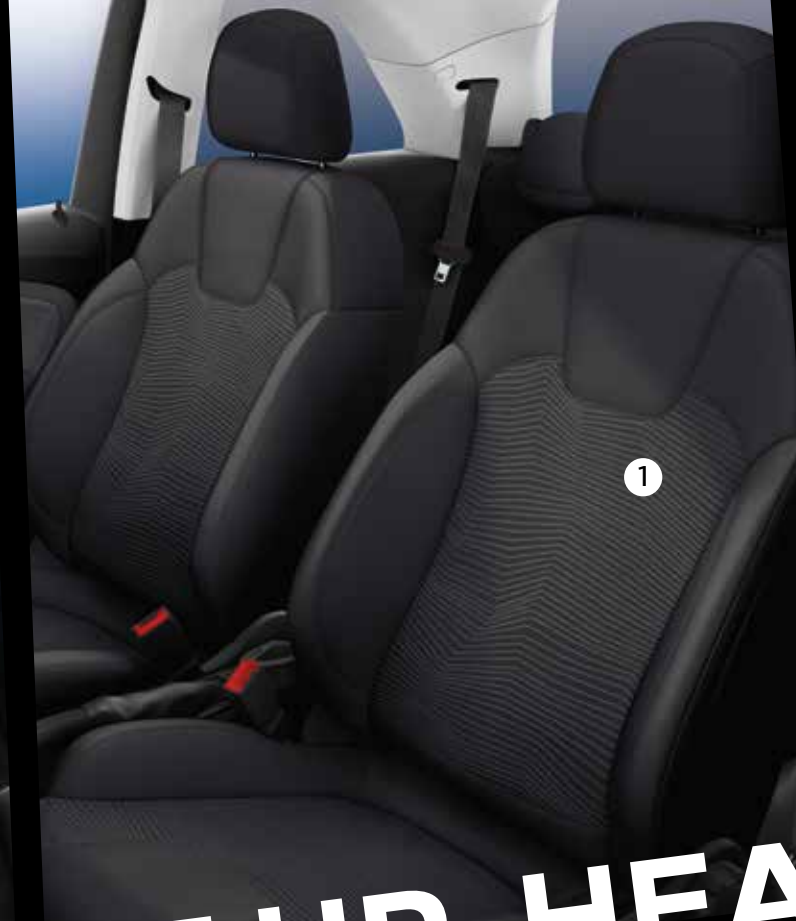
Dark-tinted rear windows and LED daytime running lights and LED tail lights are optional at extra cost.



EXPLORE YOUR DARK SIDE

Bring the mood on with the ADAM ENERGISED Black Jack featuring a Black Jack bonnet, dark-tinted rear windows and carbon-fibre effect rear-view mirror cover creating a bold, sporty look with dynamic style.





GET IN. START UP. HEAD OUT

Whatever colour you choose outside, it's complemented inside the feature-packed ADAM ENERGISED with coloured facia and door inserts** – each carefully selected to help create a cabin you'll want to be in. Feeling energised yet?

You'll find yourself surrounded by tech as well as style too. Front and centre is an IntelliLink infotainment system with USB facility, Bluetooth® connectivity† and digital radio. And with Apple CarPlay™ or Android Auto™ you can display†† certain apps from your smartphone on the 7-inch colour display.

Comfort, fun and cool tech rank pretty high with ADAM ENERGISED.

- 1 Ocio black cloth/leather-effect seats
- 2 IntelliLink infotainment system with 7-inch colour touchscreen
- 3 Smartphone projection
- 4 Air conditioning
- 5 USB facility and Bluetooth® connectivity
- 6 Leather-covered steering wheel with audio controls
- 7 Sports pedals
- 8 Cruise control
- 9 Trip computer
- 10 Colour-keyed interior décor inserts

**Please refer to the ADAM Price and Specification Guide for full details.
†The majority of phones, MP3 players and tablets can be connected by either Bluetooth® or USB connection. Please note you may need to change your connection method (i.e. from Bluetooth® to USB cable) if you want to access another function on your device. ††Please note that compatibility and certain functions may be different depending on the type of device and version of operating system you're using with the IntelliLink systems. To check compatibility go to www.apple.co.uk or www.android.com. You may also incur additional costs from your operator for some services and as such we recommend that you check the data costs on your tariff. Apple and iPhone are trademarks of Apple Inc. registered in the U.S. and other countries. Android is a trademark of Google Inc. also registered in the U.S. and other countries.



9

8

6

10

10

7

5

ADAM ENERGISED features & specification

ADDITIONAL FEATURES ALSO INCLUDE:

Engine & Performance

- 1.2i (70PS)
- Maximum power 70PS (51kW) @ 5600rpm
- Maximum torque 115Nm (85 lb.ft.) @ 4000rpm
- Maximum speed: 103mph
- Acceleration 0-62mph: 14.9 seconds

Safety & Security

- Airbags:**
- Six airbags
 - Deactivation switch for front passenger's front and side-impact airbags

- Seating:**
- Height-adjustable front and rear seat head restraints
 - Front body-lock diagonal seatbelt pretensioner system
 - Driver's and front passenger's lap belt pretensioner system
 - ISOFIX child seat restraint system for rear seats incorporating top tether (does not include child seat)

- Electronic:**
- Electronic Stability Programme-plus (ESP-plus)
 - Anti-lock Braking System (ABS)
 - Electronic brakeforce distribution
 - Cornering brake control
 - Emergency brake assist
 - Hill start assist
 - Straight line stability control
 - Traction control
 - Tyre pressure monitoring system

- Security:**
- Remote control two-stage central deadlocking (doors, tailgate, fuel filler flap)
 - Electronic engine deadlock immobiliser
 - Electronic theft protection for audio equipment
 - Driver's and front passenger's internal central locking switch
 - Luggage area cover
 - Folding key (colour-keyed to body colour)

Facia instruments and controls

- Leather-covered steering wheel
- Multi-function trip computer*
- Cruise control with speed limiter function
- Rev counter
- Digital clock with automatic RDS time adjustment
- Black instruments with chrome edging
- Steering column adjustable for reach and rake
- City mode button providing lighter steering at parking speeds

IntelliLink Infotainment System

- 7-inch colour touchscreen
- Music/video playback via USB
- Bluetooth® mobile phone portal
- Music streaming via Bluetooth®
- Supports Apple CarPlay™
- Supports Android Auto™
- AM/FM stereo radio with 36 station presets
- Digital radio
- RDS with Traffic Programme
- 4-speakers – 20 watts per channel output
- Steering wheel mounted audio controls

Interior Features

- Driver's seat height adjuster
- 12-volt auxiliary power socket within centre console
- Two drinks holders in rear centre console
- Chrome-effect interior door handles
- Front door pockets
- Front assist handles
- Fully carpeted and illuminated luggage area
- Twin sunvisors incorporating driver's vanity mirror with cover
- 50/50 split-folding rear seat back

Exterior Features

- Tinted glass
- Heated rear window with automatic timed cut-off
- Rear window wash/wipe
- Electrically operated front windows with safety autoreverse and one-touch facility
- Electrically adjustable and heated door mirrors
- Black B-pillars
- Lights-on audible warning
- Welcome lighting
- Body-colour door handles
- Speed-sensitive power-assisted steering
- 215/45 R 17 tyres
- Emergency tyre inflation kit (in lieu of spare wheel)

Colours and Trim

ADAM ENERGISED is available in a choice of eight exterior colours – each with complementary coloured facia and door inserts†.

- 1 Saturday White Fever
- 2 Black Jack
- 3 Red 'n' Roll
- 4 Let it Blue
- 5 Orange Alert
- 6 Red Hot Chili
- 7 White my Fire
- 8 Shades of Grey



*Information shown in the following order: instantaneous fuel consumption, average fuel consumption, range remaining, outside temperature. #Fuel consumption data and CO₂ emission data are determined using the Worldwide harmonized Light vehicles Test Procedure (WLTP), and the relevant values are translated back to allow the comparability into NEDC, according to regulations R (EC) No. 715/2007, R (EU) No. 2017/1153 and R (EU) No. 2017/1151. The values do not take into account in particular use and driving conditions, equipment or options and may vary depending on the format of tyres. For more information on official fuel consumption and CO₂ emission values, please read the guidelines at <http://carfueldata.dft.gov.uk/> and for more information on WLTP please see www.vauxhall.co.uk/wltp. †Please refer to the ADAM Price and Specification Guide for full details at vauxhall.co.uk/goADAM

DRIVE BOLD

Fuel Economy

MPG (litres/100km)** and Emissions

- Urban driving 38.7 (7.3)
- Extra-urban driving 61.4 (4.6)
- Combined figure 50.4 (5.6)
- CO₂ emissions 128g/km**

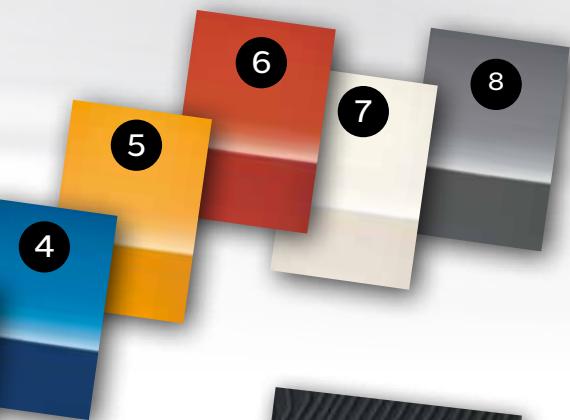
The excitement doesn't end there. There are lots of other great ADAM models to choose from. So, whether you want to top the style stakes, stand out from the crowd, or get seriously down and sporty - there's an ADAM to suit you.



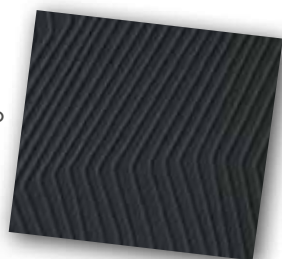
FIND YOURS:

vauxhall.co.uk/ADAM

ADAM JAM model illustrated features Style Pack and Pump up the Blue premium paint, optional at extra cost.



The seats are trimmed in Ocio Black cloth with leather-effect side bolsters.



Some feature descriptions in this brochure may refer to, and some illustrations may show, optional equipment not included in the standard delivery. The information contained in this brochure was accurate at the time of going to print. We reserve the right to make changes in design and equipment. The colours printed in the brochure only approximate actual colours. Illustrated optional equipment is available at extra charge. Availability, technical features and equipment provided on our vehicles can vary by model. For precise information on the equipment provided on our vehicles, please contact your local Vauxhall Retailer. As part of Vauxhall's policy of environmental care, this brochure is printed on paper manufactured using Elemental Chlorine Free pulps from specially farmed, sustainable timber resources.