

# THE NEW GRANDLAND X

2018 Models Edition 1



VX\_GRA\_27643




**VAUXHALL**





LIFE JUST GOT A LITTLE MORE  
**GRAND**





Isn't it funny how a little extra ride height makes you feel so much... grander? All of a sudden, commutes feel cooler. Getaways get greater. Adventures are reinvented.

But its commanding driving position is far from the only thing that's a bit grand about Grandland X. There's serious brains beneath the brawn, giving you powerful, on-the-go connectivity with the reassurance of smart safety technology.

Even as standard, it's grander. Well equipped with premium features like OnStar personal assistance and its own 4G Wi-Fi Hotspot, this is far from just another SUV.

But that's not all. There's plenty more splendid little moments to come. So turn the page and let's start feeling it.

Isn't life brilliant.

<u>EXTERIOR STYLE</u>	<u>4</u>	<u>VERSATILITY</u>	<u>20</u>
<u>INTERIOR STYLE</u>	<u>6</u>	<u>DRIVING DYNAMICS</u>	<u>22</u>
<u>INTERIOR COMFORT</u>	<u>8</u>	<u>MODEL LINE-UP</u>	<u>24</u>
<u>PARKING ASSISTANCE</u>	<u>10</u>	<u>COLOURS</u>	<u>32</u>
<u>SAFETY</u>	<u>12</u>	<u>TRIMS</u>	<u>34</u>
<u>INFOTAINMENT</u>	<u>14</u>	<u>ACCESSORIES</u>	<u>36</u>
<u>ONSTAR</u>	<u>16</u>	<u>LET'S GO GRAND</u>	<u>38</u>
<u>MY VAUXHALL</u>	<u>18</u>		



IT GETS YOU

**SO GET IN**





Look the part, and you feel the part too.  
So when you step out looking and feeling  
good, it gives you that same feeling.  
Grandland X gets this.

Or rather, Grandland X gets you. Confidently poised, it's ready to take you  
greater places. That energetic SUV design fuses lavish looks with practical  
versatility. So, while the LED daytime running lights are sharply stylish, they  
also improve your visibility for greater safety.

Because that's the way Grandland X rolls – not just to look grand, but to make  
life feel that bit grander too.



VX\_GRA\_27046

YOU'RE INTO SOMETHING  
**GOOD**







No matter how good your car looks, or even how powerful it is, it should bring a smile to your face. Make you feel you've arrived – even before you've started up.

So, if you're sitting comfortably, it's probably down to Grandland X's ergonomic AGR front seats\*. With full lumbar support, extendable and tiltable cushions, each seat electrically adjusts 16 different ways for the ideal back therapy.

The soft-touch facia and controls are ergonomically designed to keep your eyes on the road. The central IntelliLink touchscreen helps too, reducing clutter for a calmer, more luxurious cabin that takes you to a happy place. Now that's grand.

\*Standard on Elite Nav and Ultimate, optional at extra cost on all other models. AGR seats are certified by the German centre of excellence for ergonomics, Aktion Gesunder Rücken (translates as 'Campaign for Healthier Backs').



VX\_GRA\_27656

# BRITISH WEATHER BEATEN

Frosty mornings, misty windows and days cold enough to freeze the carrot off a snowman. Whatever the weather, life's a bit grand inside Grandland X.

## Panoramic roof

All the heating tech inside Grandland X helps you enjoy your journeys even more, and if you treat yourself to an optional panoramic roof\* you can love the sunlight streaming in too.



VX\_GRA\_27658



1.

VX\_GRA\_27773



VX\_GRA\_27659



2.

3.

### 1. Heated windscreen\*

Starting with those icy windows, ThermaTec technology quickly unfreezes the Grandland X's windscreen, making frantic morning scraping a thing of the past.

### 2. Heated seats\*\*

With a nice clear view outside, settle inside with the warm welcome of heated front and outer rear seats.

### 3. Heated steering wheel†

Windscreen clear – check. Bottom cosy – check. How about a heated steering wheel to warm up those chilly hands on a cold morning?

\*Standard on Elite Nav and Ultimate, optional at extra cost on all other models.

\*\*Available as part of a Winter Pack on most models. Heated front seats standard on Elite Nav, heated front and outer rear seats standard on Ultimate models.

†Available as part of Winter Pack 2 on most models. Standard on Elite Nav and Ultimate models.





# MAKE A SMART **MOVE**

Driving, parking and getting around in busy towns and cities can be a challenge. Luckily, Grandland X has some moves.



## 1. Keyless entry and start\*

For starters, getting in and out and on the road is easier with keyless entry and start, which gives you secure access to your car and its ignition without taking your keys out of your pocket.

VX\_GRA\_27682



## 2. Blind spot alert\*

This is a real lifesaver. It helps prevent collisions by ultrasonically detecting vehicles hidden either side of you. If a vehicle moves into your blind spot, a warning light illuminates in the appropriate door mirror, making you aware of any hazard.



## 3. Advanced park assist\*\*

Trying to get into a tricky space? Just switch to advanced park assist. Then take your hands off the steering wheel as Grandland X steers you in. Now that's a smart move.

## 4. Rear-view camera†

If you're parking in a confined space, check the optional 180° rear-view camera so you can reverse into a tight spot with ease. Ultimate models feature a 360° panoramic camera as standard for a high and wide angle view around your car so you can move with even more confidence.

\*Standard on all models except SE.

\*\*The driver works the pedals and gears, while advanced park assist steers the car.

Standard on Ultimate models only.

†Option available from Spring 2018.





# IT LOOKS OUT **FOR YOU**

Feels grand to know you're being looked after – especially when you're busy travelling.

Based on Grandland X's front camera technology, intelligent safety assistance is built into every model, giving you a greater sense of security. It's a reassurance that makes all the difference to your journeys.

## Looking out for you

Standard on most Grandland X models, the Safety Pack combines the front camera and radar system for even greater safety assistance on the road.



VX\_GRA\_27696

### Automatic emergency braking

No trouble ahead with automatic emergency braking. In busy traffic, it warns you if you approach a vehicle too fast, and automatically brakes for you as a failsafe.



VX\_GRA\_27302

### Lane departure warning

Keep on the straight and narrow with lane departure warning. If you drift out of your lane without signalling, the system alerts you with a sound, then a gentle nudge of your steering wheel.



VX\_GRA\_27734

### Driver drowsiness system

This potentially life saving safety feature monitors your driving time and behaviour to help prevent accidents if you seem tired.



VX\_GRA\_27772

### LED adaptive forward lighting\*

Giving you greater visibility and safety at night, LED adaptive forward lighting headlights automatically optimise the beam shape in different driving situations, from town and country roads to motorways and adverse weather.

\*Standard on Ultimate, optional at extra cost on all other models.



A man with a beard is driving a car at night. He is looking out the driver's side window. The car's interior is visible, including the steering wheel, dashboard, and rearview mirror. The car is blue. The background shows a city street at night with buildings and streetlights.

# EVERYTHING UNDER **CONTROL**

Music goes so well with driving. And so does knowing where you're going and staying connected. Luckily we thought of everything you need to stay relaxed, entertained and perfectly in control.

VX\_GRA\_27891

## Touchscreen sat nav\*

Keeping you on the right track, the Navi 5.0 IntelliLink system gives you an 8-inch colour touchscreen with fully integrated European navigation and route planning.

\*Standard on all models except SE which features the R4.0 IntelliLink touchscreen infotainment system.



VX\_GRA\_27322

## Smartphone integration

Every Grandland X features Bluetooth\*\* connectivity and USB connection. You can also connect your smartphone using Apple CarPlay™ or Android Auto™ to project your phone onto the IntelliLink† display.

Simple access to your phone, music and apps, complete with voice control.

VX\_GRA\_27756

## Premium sound system††

Pin-sharp sounds pump gloriously through the Denon® sound system, a premium Hi-Fi unit with eight speakers, bass subwoofer and 240watt amplifier – so you can really crank it up when the mood takes you.

VX\_GRA\_27307

## Wireless charging dock#

Oh yes, and there's a handy wireless charging dock to keep your smartphone charged, hands-free and ready when you're on the go.

\*\*The majority of phones, MP3 players and tablets can be connected by either Bluetooth®, USB connection or aux-in. Please note you may need to change your connection method (i.e. from Bluetooth® to USB cable) if you want to access another function on your device. †Compatibility and certain functions may be different depending on the type of device and operating system you're using with the IntelliLink systems. Apple CarPlay™ is a trademark of Apple Inc., registered in the U.S. and other countries. Android is a trademark of Google Inc. also registered in the U.S. and other countries. ††Standard on Ultimate. Optional on all other models. #Standard on Elite Nav and Ultimate. Optional on all other models.





# MEET YOUR **IDEAL TRAVEL COMPANION**

Journeys go faster with great company. It's just a good feeling to have someone with you along the way. Which is why Grandland X comes with OnStar personal assistant.

A personal connectivity and service assistant who's always there for you, 24/7, 365 days a year. That's OnStar<sup>1</sup>.

At the push of a button, it puts you in touch with someone to help you – it could be help to find or unlock your car, or immediate emergency assistance – whatever happens, OnStar's there for you.

Oh yes, and how could we forget OnStar also features a 4G Wi-Fi Hotspot<sup>2</sup>? Perfect for hooking up to seven devices (I want to be at that party). Isn't this just the kind of mate you'd like on your next road trip? And we guarantee it won't complain about the music you play – a perfect travel companion indeed.

<sup>1</sup>Standard on all Grandland X models.

<sup>2</sup>Vauxhall are not responsible for the provision of OnStar services or Wi-Fi services. OnStar Services require activation and account with OnStar Europe Ltd, (a GM Company). Wi-Fi services require additional account with OnStar Europe Limited's mobile network operator supplier. All services subject to mobile network coverage and availability. Use of OnStar services (except Wi-Fi) is free of charge for 12 months from registration date or delivery of vehicle, whichever comes first. Charges apply after expiry of applicable trial periods. Check [vauxhall.co.uk/onstar](http://vauxhall.co.uk/onstar) for service limitations and charges. <sup>2</sup>The 4G Wi-Fi Hotspot services require account with OnStar Europe Ltd. and nominated network operator. The Wi-Fi trial has a time limit and capped data allowance. Charges apply thereafter. All services subject to mobile network coverage and availability.



SOS

## YOU'RE SAFE

With OnStar you have emergency assistance at your fingertips, available 24 hours a day, 365 days a year.

// **Automatic Crash Response<sup>1</sup>:**

in case of a crash and an airbag deploys, our advisors automatically connect to your car. If needed, they immediately brief the emergency services with key car information and can send them to your exact location.

// **24-Hour Emergency Call Service<sup>1</sup>:**

you or a passenger are not feeling well? Push the red SOS button and our advisors make sure to send help right away.

// **Roadside Assistance<sup>1,3</sup>:**

if you have a flat tyre or a warning light in the dashboard goes on, just contact our advisors and they will send Roadside Assistance to your location, if required. This is even more valuable in areas with weaker mobile phone coverage or if your smartphone has run out of battery.

// **Stolen Vehicle Assistance<sup>1</sup>:**

in case your car gets stolen, report it to the police and get a crime reference number. Once the car stops and is turned off, OnStar blocks the ignition so the car can't be restarted again and provides the police with the exact vehicle location to help retrieve your car safely.



## YOU'RE WELL CONNECTED

Nowadays, we're pretty used to having Wi-Fi on tap almost everywhere. So why not your car? And you can use the smartphone app to view the status of some functions, locate your car, and lock or unlock it if needs be.

// **Wi-Fi Hotspot<sup>1,2</sup>:**

a fast and stable Internet connection enables you and your passengers to work, surf or just stream movies on up to 7 devices – thanks to the powerful OnStar roof antenna.

// **Remote Control<sup>1,4</sup>:**

if you forgot to lock your car, you can use your smartphone to remotely lock or unlock it, even from afar, thanks to the **My Vauxhall Smartphone App**.

// **Car Locator<sup>1,4</sup>:**

forgot where you've parked? Pinpoint your car's location on the app. If you are close and still do not see it, just blink the headlights or honk the horn to see where you've parked.



## YOU'RE LOOKED AFTER

Who wouldn't want a personal assistant?

At the touch of a button, you'll be connected to an assistant who's at your service – 24 hours a day, 7 days a week.

// **Hotel Booking<sup>1,5</sup>:**

plans changed? Or too tired to keep driving? Let our advisors take care of your hotel booking en route, powered by Booking.com. Just press the blue Service Button.

// **Parking Service<sup>1,6</sup>:**

never search for a car park space again! Using Parkopedia.com, OnStar can find the nearest car park to your destination. That way, before you even get there, you'll already know the availability and parking fee. How's that for personal service? All without leaving your new Grandland X.

<sup>3</sup> OnStar will direct a professional breakdown recovery team to your location. If your car is within the Vauxhall New Vehicle Roadside Assistance coverage period, OnStar will connect with the Vauxhall Roadside Assistance service, who will send help free of charge, subject to the Vauxhall Roadside Assistance terms and conditions. If your vehicle is outside the coverage of the Vauxhall New Vehicle Roadside Assistance service, the provider of the breakdown recovery service may apply charges for the services provided. <sup>4</sup> Some elements of Smartphone App may not be available for all cars/trim levels. Check [vauxhall.co.uk/onstar](http://vauxhall.co.uk/onstar) for service limitations and charges. <sup>5</sup> An OnStar advisor can help you book a hotel room using Booking.com, subject to Booking.com user terms and privacy statement, which can be found on the Booking.com website, and the applicable terms and conditions for your hotel. OnStar assists you in making a booking and is not responsible for the services provided by Booking.com or your hotel. Email address and credit card required. <sup>6</sup> Some elements of Smartphone App may not be available for all cars/trim levels. Check [vauxhall.co.uk/onstar](http://vauxhall.co.uk/onstar) for service limitations and charges. <sup>7</sup> Only available for car parks which are listed in Parkopedia. Information about availability applies for the time of contact with OnStar.



# HOW TO GET ONSTAR

OnStar is standard on all Grandland X models.

1. We will send you an e-mail so you can activate your account  
– then just complete your registration and set your preferences.
2. Just activate OnStar when you take delivery of your new Grandland X.
3. OnStar is ready to go!

Best of all the OnStar services are free of charge for the first 12 months<sup>1</sup>. You'll also get a free data trial period for the 4G Wi-Fi Hotspot<sup>2</sup>.

You can purchase Wi-Fi Hotspot data packages separately from the nominated network provider by following the instructions on [vauxhall.co.uk/onstar](http://vauxhall.co.uk/onstar). Charges apply after the free trial period.



To ensure your privacy, you can turn OnStar off and on anytime\*. Find out more at [vauxhall.co.uk/onstar](http://vauxhall.co.uk/onstar)

\*OnStar can only override the Privacy Button in an emergency or if your car is reported stolen.  
**1** The OnStar services require activation and account with OnStar Europe Ltd. Charges apply after applicable trial period. All services subject to mobile network coverage and availability. The OnStar subscription packages could be different from the services included in the free trial package. Check [vauxhall.co.uk/onstar](http://vauxhall.co.uk/onstar) for details of availability, coverage and charges. Terms and conditions apply.

**2** The 4G Wi-Fi Hotspot services require account with OnStar Europe Ltd. and nominated network operator. The Wi-Fi trial has a time limit and capped data allowance. Charges apply thereafter. All services subject to mobile network coverage and availability.



# GET MORE FROM YOUR CAR WITH MY VAUXHALL

My Vauxhall is your one-stop shop for everything to do with your Grandland X. Manage your OnStar account. Organise your car's next service. Get rewards and exclusive savings for you.

// Manage your Vauxhall – take care of your Vauxhall online and book a service

// Access your OnStar services – get diagnostics reports, manage your subscription and more

// Exclusive offers – stay up to date on special offers, the latest news and current events

// Retailer locator – find your nearest Vauxhall retailer

# HOW TO GET MY VAUXHALL

If you already use OnStar, you can access all the My Vauxhall services. Otherwise, simply register for My Vauxhall this way:

1. When you order your Grandland X, your retailer will help you pre-register for My Vauxhall.
2. We'll send you an e-mail invitation to activate your My Vauxhall account and complete your registration.
3. My Vauxhall is ready to go – use it through any web browser, or the My Vauxhall app on your mobile device, available to download from the Google Play or Apple App Store.



VX\_MYVX\_27574





# OPEN TO **IDEAS**

Space. Like time, it's something that's often a bit scarce.

Thing is, with a bit of clever thinking, there's always ways to make more. Grandland X starts off with a generous 514 litres of rear storage, but with a simple flip of the rear seats, space expands to 1652 litres. Perfect for storing extra kit, luggage and loads of all sizes.



### Power tailgate\*

Complementing Grandland X's keyless entry and start system, a sensor-operated power tailgate gives you hands-free access when you're carrying and loading luggage. Just swipe your foot under the rear bumper to spring open the tailgate – grand.

### Split-folding rear seats\*

Make space work your way with seats that fold down flat in one easy hand movement. They've got a 60/40 split ratio too, so they adapt for all sorts of tasks.

VX\_GRA\_27289



VX\_GRA\_27758

### Flexible space\*

Perfect for long loads, the seats feature a pass-through space so you can safely store anything from ski gear to fishing tackle inside your car.

\*Standard on all other models except SE.





# GRIP THOSE **CURVES**

Who doesn't love the confidence of control? That feeling of knowing what you can do, and just being able to do it.

That's exactly what makes Grandland X gripping stuff on every stretch, turn and curve. Oh yes, and its economical fuel consumption means you'll refuel less often, which can only add to that good mood.

VX\_GRA\_27702



VX\_GRA\_27771



VX\_GRA\_27285



## Gripping stuff

IntelliGrip traction control is an intelligent front-wheel drive system that gives you greater traction in different driving conditions by adjusting torque distribution and optimising the operation of the ESP system.

There are four different modes; standard ESP operation plus a mode for driving in snow, in muddy conditions or on sand. So wherever you might head off you can dial in the right level of grip.

## Lean, mean and clean

A powerful range of super-efficient petrol and diesel turbo engines (including a 177PS 2.0 turbocharged diesel) give you a choice of manual or automatic transmissions, all with our Start/Stop fuel saving system. All diesel

engines feature BlueInjection, our next generation NOx emission control technology, using AdBlue® to reduce nitric oxide levels and improve emissions.

## Smooth moves

Whichever transmission you prefer, we've got the right gear. Choose between a 6-speed manual or 6-speed automatic model with Quickshift transmission for unprecedented smoothness.

The 2.0 litre turbocharged diesel engine on Ultimate models features a sophisticated 8-speed automatic transmission as standard.

### PERFORMANCE, FUEL ECONOMY AND EMISSIONS

	Performance (manufacturer's figures)		Fuel economy mpg (litres/100km)*			CO <sub>2</sub> emissions (g/km)*	Vehicle Excise Duty**		Benefit-in-Kind rate (2017/18 tax year)
	Max speed (mph)	Acceleration 0-62mph (sec)	Urban driving	Extra-urban driving	Combined figure		First year rate	Standard rate	
<b>Petrol</b>									
1.2 (130PS) Turbo Start/Stop	117	11.1	44.1 - 47.1 (6.4 - 6.0)	57.6 - 62.8 (4.9 - 4.5)	52.3 - 55.4 (5.4 - 5.1)	124 - 117	£160	£140	22% - 23%
1.2 (130PS) Turbo Start/Stop automatic	117	10.9	44.1 - 44.8 (6.4 - 6.3)	57.6 - 60.1 (4.9 - 4.7)	51.4 - 54.3 (5.5 - 5.2)	127 - 120	£160	£140	23% - 24%
<b>Diesel</b>									
1.6 (120PS) Turbo D Start/Stop BlueInjection†	117	11.8	57.6 - 60.1 (4.9 - 4.7)	72.4 - 80.7 (3.9 - 3.5)	65.7 - 70.6 (4.3 - 4.0)	111 - 104	£140 - £160	£140	22% - 24%
1.6 (120PS) Turbo D Start/Stop automatic BlueInjection†	115	12.2	55.4 - 57.6 (5.1 - 4.9)	67.3 - 70.6 (4.2 - 4.0)	61.4 - 65.7 (4.6 - 4.3)	118 - 112	£160	£140	24% - 25%
2.0 (177PS) Turbo D Start/Stop automatic BlueInjection†	133	9.1	53.3 (5.3)	61.4 (4.6)	57.6 (4.9)	128	£160	£140	27%

Please note, exact fuel economy and emission data will be determined by the wheel and tyre specification. For exact information by model and engine size, please see the Grandland X Price and Specification available to download from [vauxhall.co.uk](http://vauxhall.co.uk). \*Official Government Test Environmental Data. Official EU-regulated test data is provided for comparison purposes and actual performance will depend on driving style, road conditions and other non-technical factors. \*\*Correct at time of publication. †Please note: Vehicles with BlueInjection technology will need regular AdBlue® top-ups also between servicing requirements. An indicator integrated into the on-board computer will warn you when you need to top up. More information under [vauxhall.co.uk/blueinjection](http://vauxhall.co.uk/blueinjection).

In accordance with regulations R (EC) No. 715/2007 and R (EC) No. 692/2008 (in the versions respectively applicable). Fuel tank capacity: 53 litres (11.6 gallons).



## Standard features include:

### OnStar:

- Automatic crash response/Wi-Fi hotspot/smartphone app/stolen vehicle assistance/vehicle diagnostics

### Infotainment:

- R4.0 IntelliLink system
  - Smartphone projection, Apple CarPlay™ and Android Auto™
  - 7-inch colour touchscreen
  - AM/FM/digital radio
  - Bluetooth® audio streaming and mobile phone portal
  - USB connection with iPod control

### Interior convenience/styling:

- Dual-zone electronic climate control
- Cruise control with speed limiter
- Multi-function trip computer
- Leather-covered steering wheel
- Steering column adjustable for reach and rake
- Steering wheel mounted audio controls
- 220-volt power outlet behind front seats
- 60/40 split-folding rear seat

### Exterior convenience/styling:

- Silver-effect 17-inch alloy wheels
- Front fog lights
- Auto lighting and windscreen wipers
- Electrically adjustable/heated door mirrors
- Electrically operated front and rear windows
- Remote control central locking

### Safety/security:

- Switchable electronic stability programme
- Anti-lock braking system
- Lane departure warning
- Speed sign recognition
- Rear parking distance sensors
- Traction control
- Hill start assist
- Security alarm system

# GRANDLAND X SE



White Jade brilliant paint is optional at extra cost.



18-inch silver-effect alloy wheels optional at extra cost.

VX\_GRA\_27290

### Petrol

- 1.2 (130PS) Turbo S/S
- 1.2 (130PS) Turbo S/S auto

### Insurance groups (ABI)

- 15E
- 15E

### Diesel

- 1.6 (120PS) Turbo D S/S BlueInjection
- 1.6 (120PS) Turbo D S/S auto BlueInjection

- 18E
- 18E

S/S = Start/Stop.

# GRANDLAND X

TECH LINE NAV



VX\_GRA\_27669

Golden Sunstone two-coat premium paint is optional at extra cost.

VX\_GRA\_27755



Ergonomic AGR black cloth sports-style front seats are optional at extra cost.

## Features over and above SE include:

### Interior convenience/styling:

- Ambient lighting
- Flex Floor
- Alloy-effect door sill covers

### Infotainment:

- Navi 5.0 IntelliLink system
- Fully integrated European sat nav system
- 8-inch colour touchscreen
- Voice control

### Exterior convenience/styling:

- Silver-effect 18-inch alloy wheels
- Alloy-effect protective front and rear skid plates
- Power tailgate
- Electrically foldable door mirrors with puddle lights
- Dark-tinted rear windows
- Chrome-effect side window trim

### Safety/security:

- Safety Pack
- Driver drowsiness system
- Forward collision alert
- Automatic emergency braking
- Lane assist
- Side blind spot alert
- Front parking distance sensors
- Keyless entry and start

### Petrol

- 1.2 (130PS) Turbo S/S
- 1.2 (130PS) Turbo S/S auto

### Insurance groups (ABI)

- 12E
- 12E

### Diesel

- 1.6 (120PS) Turbo D S/S BlueInjection
- 1.6 (120PS) Turbo D S/S auto BlueInjection

- 14E
- 14E

S/S = Start/Stop.



# GRANDLAND X

## SPORT NAV

VX\_GRA\_27754



Standard 18-inch diamond-cut alloy wheels illustrated.  
Dark Ruby Red two-coat metallic paint is optional at extra cost.

### Petrol

1.2 (130PS) Turbo S/S  
1.2 (130PS) Turbo S/S auto

### Insurance groups (ABI)

12E  
12E

### Diesel

1.6 (120PS) Turbo D S/S BlueInjection  
1.6 (120PS) Turbo D S/S auto BlueInjection

15E  
15E

S/S = Start/Stop.

## Features over and above SE include:

### Interior convenience/styling:

- Ambient lighting
- Flex Floor
- Alloy-effect door sill covers

### Infotainment:

- Navi 5.0 IntelliLink system
  - Fully integrated European sat nav system
  - 8-inch colour touchscreen
  - Voice control

VX\_GRA\_27897



18-inch silver-effect alloy wheels available as a no-cost option.

### Exterior convenience/styling:

- 18-inch diamond-cut alloy wheels
- Alloy-effect protective front and rear skid plates
- Power tailgate
- Electrically foldable door mirrors with puddle lights
- Dark-tinted rear windows
- Chrome-effect side window trim

VX\_GRA\_27292



### Safety/security:

- Safety Pack
  - Driver drowsiness system
  - Forward collision alert
  - Automatic emergency braking
  - Lane assist
- Side blind spot alert
- Front parking distance sensors
- Keyless entry and start

Ergonomic AGR medium atmosphere cloth sports-style front seats are optional at extra cost.



# GRANDLAND X

ELITE NAV

VX\_GRA\_27884



Moonstone Grey two-coat metallic paint is optional at extra cost.

## Petrol

- 1.2 (130PS) Turbo S/S
- 1.2 (130PS) Turbo S/S auto

## Insurance groups (ABI)

- 14E
- 14E

## Diesel

- 1.6 (120PS) Turbo D S/S BlueInjection
- 1.6 (120PS) Turbo D S/S auto BlueInjection

- 16E
- 16E

S/S = Start/Stop.

## Features over and above SE include:

### Interior convenience/styling:

- Leather seat facings
- Ergonomic sports front seats
- Power driver's seat
- Heated front seats
- Heated steering wheel
- Ambient lighting
- Flex Floor
- Alloy-effect door sill covers

### Infotainment:

- Navi 5.0 IntelliLink system
  - Fully integrated European sat nav system
  - 8-inch colour touchscreen
  - Voice control
  - USB connection with iPod control
- Wireless phone charger

VX\_GRA\_27293



### Exterior convenience/styling:

- 19-inch diamond-cut alloy wheels
- Alloy-effect protective front and rear skid plates
- Fixed panoramic glass sunroof with electrically operated sunblind
- Heated windscreen
- Power tailgate
- Dark-tinted rear windows
- Chrome-effect side window trim

### Safety/security:

- Safety Pack
  - Driver drowsiness system
  - Forward collision alert
  - Automatic emergency braking
  - Lane assist
- Side blind spot alert
- Keyless entry and start



# GRANDLAND X

ULTIMATE

VX\_GRA\_27801



Topaz Blue two-coat metallic paint is optional at extra cost.

## Diesel

2.0 (177PS) Turbo D S/S auto BlueInjection

S/S = Start/Stop.

Insurance  
groups (ABI)

TBA

## Features over and above Elite Nav include:

### Interior convenience/styling:

- Heated outer rear seats
- Alloy-effect sports pedals

### Infotainment:

- Denon premium sound system

### Exterior convenience/styling:

- Black roof and door mirrors
- Premium LED Adaptive Forward Lighting Pack with projector headlights

### Safety/security:

- 360° panoramic camera
- Advanced park assist

VX\_GRA\_27654





# LET'S GO **BOLDER**

What's the colour that makes you feel that little bit grander inside?

It's different for everyone. Could be a pristine white or perhaps something moodier. Or maybe the seduction of a premium or tri-coat finish. Whichever you fancy, there's plenty of ways to stand out that little bit more\*.

VX\_GRA\_27636

**Golden Sunstone** – Two-coat Premium



VX\_GRA\_27710



**Quartz Grey** – Two-coat Metallic

VX\_GRA\_27715



**Amethyst Purple** – Two-coat Premium

VX\_GRA\_27714



**Dark Ruby Red** – Two-coat Metallic

VX\_GRA\_27717



**Pearl White** – Tri-coat Premium

The vehicles shown are for colour illustrative purposes only and do not represent a specific model. \*Please refer to the latest Grandland X Price and Specification Guide available from [vauxhall.co.uk](http://vauxhall.co.uk) for details of colour availability by model and price. Due to the limitations of the printing process, the colours reproduced may vary slightly from the actual paint colour and trim material. As a result, they should be used as a guide only. Your Vauxhall retailer has a comprehensive display of paint finishes.

VX\_GRA\_27711

**Moonstone Grey** – Two-coat Metallic



VX\_GRA\_27709

**Jasper Grey** – Solid



VX\_GRA\_27716

**Topaz Blue** – Two-coat Metallic



VX\_GRA\_27708



**White Jade** – Brilliant

VX\_GRA\_27712



**Diamond Black** – Two-coat Metallic\*

VX\_GRA\_27671



### Black on top\*\*

Oh yes, if you choose the Grandland X Ultimate trim, you can match your body colour with a jet black roof (with black door mirrors) for even more dynamism.

\*\*Roof rails only available on Ultimate models in combination with the deletion of the panoramic glass roof.



# A COMFORTABLE DECISION

Apart from driving, what else do you do in your car all the time?

You guessed it – sitting down.

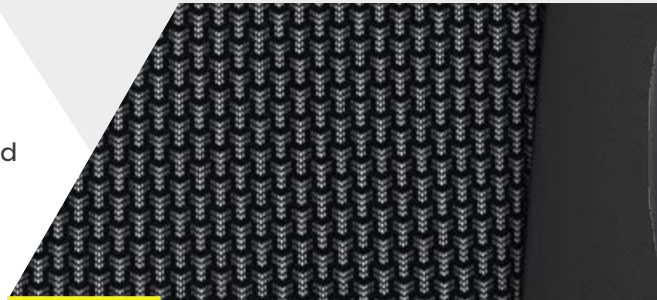
Which is why we pay plenty of attention to the comfort, spec and style of Grandland X's seats.

Comfort driver seats are all eight-way adjustable, and passenger seats are up to eight-way\* adjustable, so you get exactly the right support for your body.

There's a natty range of upholstery trims too, from stylish black and two-tone fabrics to sporty perforated leather hides.

If you drive a lot, AGR-approved\*\* ergonomic sports front seats are worth a thought. Adjustable 16 ways, they provide ultimate support and comfort to help look after your back on long trips – a grand idea for body and soul.

Berson black fabric



VX\_GRA\_27748



VX\_GRA\_27899

\*Six-way on SE, eight-way on Tech Line Nav and Sport Nav.

\*\*AGR stands for Aktion Gesunder Rücken, which translates as the Campaign for Healthier Backs.

Harlekin black fabric

VX\_GRA\_27749

Harlekin medium atmosphere fabric

VX\_GRA\_27752

Black Siena perforated leather

VX\_GRA\_27750





# GIVE YOUR DRIVE A LITTLE **EXTRA**

Having just the right little extra makes a big difference to your journeys. We've only shown you a small selection here but log on to [vauxhall.co.uk/accessories](http://vauxhall.co.uk/accessories) to see the complete range.

Treat your feet. Your car floor stays protected and comfortable with a set of four high-quality mats, available in durable black velour or toughened, anti-slip rubber, they're styled with the Grandland X logo.

VX\_GRA\_27701



GRANDLAND X

VX\_GRA\_27676

Clean getaway. Keep your paintwork pristine with front and rear splash guards designed for superior protection against mud and water splashes and stone chips. Available in classic black with an easy clean finish.



Grandland X

VX\_GRA\_27774



1.

VX\_GRA\_27738



2.

**1. Screen time.** Keep your rear seat passengers entertained with this FlexConnect tablet holder that securely adjusts for every viewing angle. Other FlexConnect attachments are available for holding shopping bags, jackets and drinks.

**2. Nice footwork.** Add an even more stylish and sporty look to your Grandland X's interior with the racing glitz of alloy pedal covers, available for either manual or automatic transmissions.

**Big up your adventures.** Aerodynamic Thule® roof boxes, available in a range of stylish finishes complement Grandland X's shape. There's a range of sizes, which use a Power-Click quick mounting and safety locking system, increasing your load capacity by up to 520 litres for even grander escapes.

**Furry good idea.** If you have a four-legged friend, a fitted dog guard is the perfect way to separate the passenger and luggage compartments to keep your furry pal happy and safe (and your rear seats tidy!).

**Tidy travels.** Drive smart with a Grandland X cargo liner. Available as a velour carpet load liner (illustrated left) or a custom moulded tray with a raised lip to keep loads and spills contained, both are designed to keep your boot floor clean, tidy and protected.



VX\_GRA\_27775



LET'S GO

# GRAND



## Riding high, in the zone and effortlessly in control. Life's a little bit larger in the new Grandland X.

You can drive more safely than ever, see more of the road ahead, and enjoy every journey in comfort with the reassurance of smart connectivity.

Available with intelligent safety assistance, Adaptive Forward Lighting LED headlights, your OnStar personal assistant, a 4G Wi-Fi hotspot and AGR seats (to name just a few goodies), Grandland X takes you to grander places.

So go on, give yourself something grand.

## Get into Grandland X.

To feel the greatness of Grandland X the best way is to get in it and see for yourself. Visit [vauxhall.co.uk/grandlandx](http://vauxhall.co.uk/grandlandx) to find your nearest retailer and arrange a test drive.



# Trust Vauxhall

## Company Car Driver 3 Day Test Drive

Our free\* 3 Day Test Drive programme is open to all Company Car Drivers which allows you to choose any model in the current Vauxhall line-up (excluding Cascada, all VXR models and Commercial Vehicles), with insurance cover provided, to give you a meaningful length of time to make an informed decision about your next company car.

To book your free\* test drive just log on to [vauxhall3dtd.co.uk](http://vauxhall3dtd.co.uk) or call **0330 587 8221\*\***



## Fleet Customer Services

Our dedicated support services for fleet decision makers include factory demonstrators and information on whole life costs, company car taxation and finance.

For further information please call **0330 587 8222**

## For more information...

For a brochure on any Vauxhall model (up to a maximum of three per caller) or location of your nearest Vauxhall retailer, please call **0345 600 1500**

Alternatively, details can be found on our website at [vauxhall.co.uk](http://vauxhall.co.uk)

Join us online:



## PROUD SPONSOR OF OUR NATIONAL FOOTBALL TEAMS



Scan this QR code with your smartphone for more information. Don't forget to download a QR reader from your app store first.

\*The free 3 Day Test Drive programme is open to Company Car Drivers and Fleet Decision Makers. Available for UK Mainland only. Terms and Conditions apply. Full terms and conditions can be found at [vauxhallfleet.co.uk/testdrive/index/terms](http://vauxhallfleet.co.uk/testdrive/index/terms). \*\*Telephone lines open Monday-Friday 9.00am to 5.00pm excluding Bank Holidays. Calls may be recorded or monitored for quality and/or training purposes.

Privacy Policy – For full details please visit: [vauxhall.co.uk/privacy](http://vauxhall.co.uk/privacy)

OnStar privacy details are available at [vauxhall.co.uk/onstar](http://vauxhall.co.uk/onstar)

Some feature descriptions in this brochure may refer to, and some illustrations may show, optional equipment not included in the standard delivery. The information contained in this brochure was accurate at the time of publication. We reserve the right to make changes in design and equipment. The colours printed in the brochure only approximate actual colours. Illustrated optional equipment is available at extra charge. Availability, technical features and equipment provided on our vehicles can vary by model. For precise information on the equipment provided on our vehicles, please contact your local Vauxhall Retailer. As part of Vauxhall's policy of environmental care, this brochure is printed on paper manufactured using Elemental Chlorine Free pulps from specially farmed, sustainable timber resources.

# VAUXHALL

[vauxhall.co.uk/grandlandx](http://vauxhall.co.uk/grandlandx)

V1 ©2017 Vauxhall Motors Limited

Published December 2017 Vauxhall Motors Limited